

**REPUBLIC OF IRAQ**

**MINISTRY OF PLANNING**

**Iraq Social Fund for Development  
SFD  
(P163108)**

**ENVIRONMENTAL AND SOCIAL MANAGEMENT  
PLAN (ESMP)**

**FOR THE**

**CONSTRUCTION OF  
RAIN WATER NETWORK FOR VILLAGE (SIKANYAN) AND  
CONSTRUCTING WATER NETWORK IN THE VILLAGE OF  
(AL-MAKAM, HAOD 6, SONOR)**

**IN  
KIRKUK GOVERNORATE**

**10<sup>TH</sup> JULY 2023**

## Contents

PART A: GENERAL PROJECT AND SITE INFORMATION .....	3
Country .....	3
Project Title.....	3
Introduction .....	3
Project Location.....	4
Project Duration.....	5
Proposed Project Activities .....	5
Land Use and Acquisition.....	9
Contractor’s Camp.....	9
Geographic Conditions .....	9
Climate, Air Quality and noise.....	9
Hydrogeology Conditions .....	10
Ecology Conditions .....	10
Heritage Environment.....	10
Socio-economic Aspects.....	10
National & Local Legislation and World Bank Policies that Apply to the Project .....	10
Public Consultation Process.....	14
Consultation Results:.....	14
GRM Process.....	15
PART B: SAFEGUARDS SCREENING AND TRIGGERS .....	18
PART C: .....	19
PART D: MONITORING PLAN/ CONSTRUCTION PHASE .....	41
ANNEXES .....	50
Annex 1: Consultations Photos.....	50
Annex (2): Sample individual interviews for both men and women in the village .....	51
ANNEX (3): IRAQI STANDARDS FOR AIR, NOISE, and Water.....	54
Annex (4): Contractor’s Responsibilities (Arabic) مسئوليات المقاول.....	57
Annex (5): Cultural Heritage Chance Find Procedure.....	62
ANNEX (6): Letter of clearance from UXO.....	63

# IRAQ: Social Fund for Development Project

## PART A: GENERAL PROJECT AND SITE INFORMATION

INSTITUTIONAL & ADMINISTRATIVE	
<b>Country</b>	IRAQ
<b>Project Title</b>	<b>CONSTRUCTION OF RAIN WATER NETWORK FOR VILLAGE (SIKANYAN) AND CONSTRUCTING WATER NETWORK IN THE VILLAGE OF (AL-MAKAM, HAOD 6, SONOR) \ KIRKUK GOVERNORATE.</b>
<b>Introduction</b>	<p>Iraq faces a historic opportunity for national reconciliation through the effective delivery of critical social services, economic growth and recovery programs. The reinstatement of trust between the State and its citizens is highly dependent on the Government of Iraq (GOI) demonstrating its capacity to deliver security, jobs and economic growth to all Iraqis, with a focus on the poor, the vulnerable and the millions of Internally Displaced People (IDP).</p> <p>The GOI, represented by the Ministry of Planning (MOP), requested the World Bank’s support in the design and financing of a Social Fund for Development (SFD) project to support locally driven initiatives to improve the living conditions and opportunities of the poor and most vulnerable in Iraq. The GOI has demonstrated its commitment and support to the design of this operation and established a high-level national team to guide and coordinate the development and institutionalization of the SFD, as well as five technical teams to work on the different aspects of the fund.</p> <p>The Project Development Objectives (PDOs) are to: (1) Improve access to basic services and (2) Increase short-term employment opportunities, in targeted communities. This environmental and social management checklist reflects the main issues (project description and activities, baseline conditions, impact analyses, mitigation measures and monitoring arrangements). The main objective of this document is to examine the environmental and socio-economic impacts of the project (both construction and operation phases), and to propose mitigation measures. The project is expected to result in significant socio-economic benefits for the local communities and surrounding areas in addition to developing social awareness and group responsibility.</p>

## PROJECT LOCATION & SITE DESCRIPTION

### Project Location

According to the Environmental and Social Management Framework (ESMF) which was prepared for the Iraq Social Fund for Development Project disclosed locally in Iraq and on the World Bank's website<sup>1</sup>. Environmental and Social Management plan (ESMP)/ Environmental and Social Management Checklist should be prepared, cleared, publicly consulted and disclosed prior to the commencement of any rehabilitation activity. The World Bank Operational Policy 4.01 on Environmental Assessment was triggered as the proposed Subprojects has some potential negative environmental and social impacts. Accordingly, this Environmental and Social Management Checklist is required to implement the Sub-project in accordance with the requirements of the World Bank's Operational Procedures and applicable Iraqi national legislation.

The subproject is located in the governorate of Kirkuk that is situated in northern Iraq, the Lower Zab and Tigris rivers in the west, the Hamreen Mountains in the south, and the Sirwan (or Diyala) river in the southwest. Kirkuk is also approximately 250 kilometres (155 miles) from Baghdad (as shown in figure below). The proposed location of these rural roads will be in an open area. The construction of the projects will use the exact footprint of the existing roads and no widening of the roads will occur. The length of each road, coordinates, and the population in each village are shown in the table below:



<sup>1</sup>[https://mop.gov.iq/en/static/uploads/3/hold\\_files/1554275891f27e56413334e9be28f30a42176e33e0--Binder1.pdf](https://mop.gov.iq/en/static/uploads/3/hold_files/1554275891f27e56413334e9be28f30a42176e33e0--Binder1.pdf)

	<p style="text-align: center;"><b>Figure 1: Project Location and layout</b></p> <p>The area adjacent to the subproject's sites are characterized as rural residential and semi desertic in some areas. The subprojects are located within the residential part of the area. There are no protected areas or endangered species (there are no critical or high biodiversity values that might be affected) in the vicinity of the site. There are no close sensitive receptors located near the subprojects site. The subproject aims to:</p> <ul style="list-style-type: none"> <li>• To provide a good sanitary environmental condition of village and subsequently protecting public health.</li> <li>• Ensure the produced water quality is within the quality standards.</li> </ul>																									
<b>Project Duration</b>	The anticipated project duration is (90-120) days for the water network.																									
<b>Proposed Project Activities</b>	<p>The proposed activities for these three villages in the KIRKUK Governorate are presented in the table below:</p> <table border="1" data-bbox="423 1014 1474 1864"> <thead> <tr> <th data-bbox="423 1014 488 1098">N o.</th> <th data-bbox="488 1014 667 1098">Village</th> <th data-bbox="667 1014 821 1098">Populat ion</th> <th data-bbox="821 1014 1040 1098">Coordinates</th> <th data-bbox="1040 1014 1474 1098">Type of implantation</th> </tr> </thead> <tbody> <tr> <td data-bbox="423 1098 488 1339">1</td> <td data-bbox="488 1098 667 1339">Sikanyan</td> <td data-bbox="667 1098 821 1339">4293</td> <td data-bbox="821 1098 1040 1339">35.4402485 , 44.2341809</td> <td data-bbox="1040 1098 1474 1339">Construction of Rain water network consist of pipe of 1122m with(300mm , 400mm , 500mm , 600mm ) diameters. (duration : 90 day)</td> </tr> <tr> <td data-bbox="423 1339 488 1539">2</td> <td data-bbox="488 1339 667 1539">almakam</td> <td data-bbox="667 1339 821 1539">2500</td> <td data-bbox="821 1339 1040 1539">35.1692341 , 43.7770807</td> <td data-bbox="1040 1339 1474 1539">Construction of water network consist of pipe of 3000m with 110mm diameter. (duration : 90 day)</td> </tr> <tr> <td data-bbox="423 1539 488 1749">3</td> <td data-bbox="488 1539 667 1749">Haod 6</td> <td data-bbox="667 1539 821 1749">4203</td> <td data-bbox="821 1539 1040 1749">35.321638 , 43.6333983</td> <td data-bbox="1040 1539 1474 1749">Construction of water network consist of pipe of 5000m with 110mm diameter. (duration : 120 day)</td> </tr> <tr> <td data-bbox="423 1749 488 1864">4</td> <td data-bbox="488 1749 667 1864">Sonor</td> <td data-bbox="667 1749 821 1864">8500</td> <td data-bbox="821 1749 1040 1864">35.1340728 , 44.4065211</td> <td data-bbox="1040 1749 1474 1864">Construction of water network consist of pipe of 3100m with 110mm</td> </tr> </tbody> </table>	N o.	Village	Populat ion	Coordinates	Type of implantation	1	Sikanyan	4293	35.4402485 , 44.2341809	Construction of Rain water network consist of pipe of 1122m with(300mm , 400mm , 500mm , 600mm ) diameters. (duration : 90 day)	2	almakam	2500	35.1692341 , 43.7770807	Construction of water network consist of pipe of 3000m with 110mm diameter. (duration : 90 day)	3	Haod 6	4203	35.321638 , 43.6333983	Construction of water network consist of pipe of 5000m with 110mm diameter. (duration : 120 day)	4	Sonor	8500	35.1340728 , 44.4065211	Construction of water network consist of pipe of 3100m with 110mm
N o.	Village	Populat ion	Coordinates	Type of implantation																						
1	Sikanyan	4293	35.4402485 , 44.2341809	Construction of Rain water network consist of pipe of 1122m with(300mm , 400mm , 500mm , 600mm ) diameters. (duration : 90 day)																						
2	almakam	2500	35.1692341 , 43.7770807	Construction of water network consist of pipe of 3000m with 110mm diameter. (duration : 90 day)																						
3	Haod 6	4203	35.321638 , 43.6333983	Construction of water network consist of pipe of 5000m with 110mm diameter. (duration : 120 day)																						
4	Sonor	8500	35.1340728 , 44.4065211	Construction of water network consist of pipe of 3100m with 110mm																						

				diameter. (duration : 90 day)
<b>TOTAL</b>		<b>19496</b>		

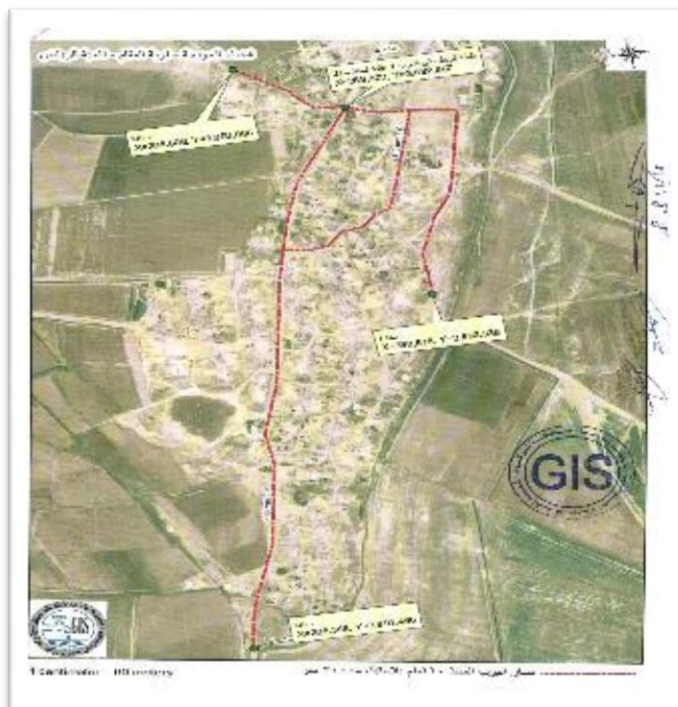
The main steps that happened to the water to be compatible with the legislations and water quality standards are:

1. Providing the necessary materials and equipment for excavating trenches at a depth of 120 cm and a width of 90 cm including cracking the sidewalks and streets.
2. Laying down and connecting plastic pipes and then wrapping the pipe with clean soil followed by connecting households by 0.5-inch diameter.
3. Backfilling of the trenches by used excavated soil at a height of (0.55 m), rehabilitation and restoration of sidewalks and streets (if any) that were demolished and returned as it was with the removal of excess construction wastes. The excavated soil resulting from the digging will be used for backfilling and refilling. However, if any surplus materials (excavated soil) remained, there will be coordination with the municipal local authority to properly dispose of the remaining material in the designated landfill.

As per design of the water distribution network, these pipes will be installed within the right of way and side walk of streets inside residential area of the village. It is not expected that these pipes will pass through agricultural/private lands and/or cause any restriction of access and livelihood impacts. Below is the network layout.

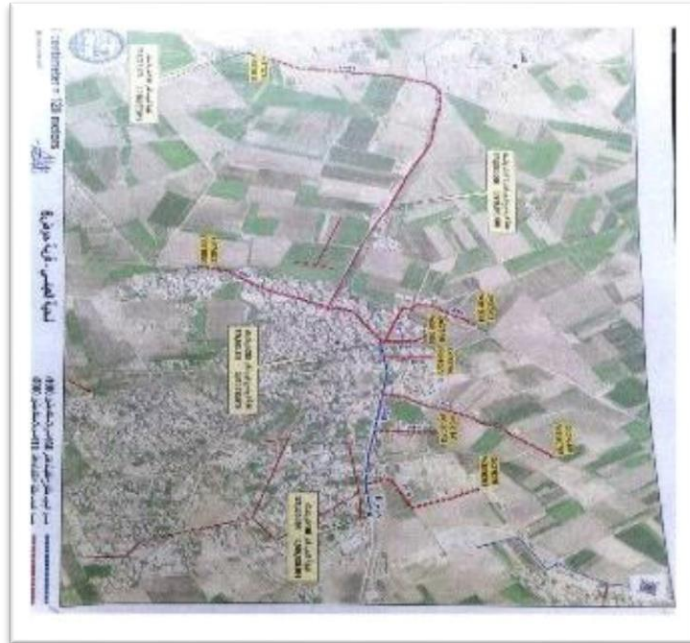


**Sikanyan Village**

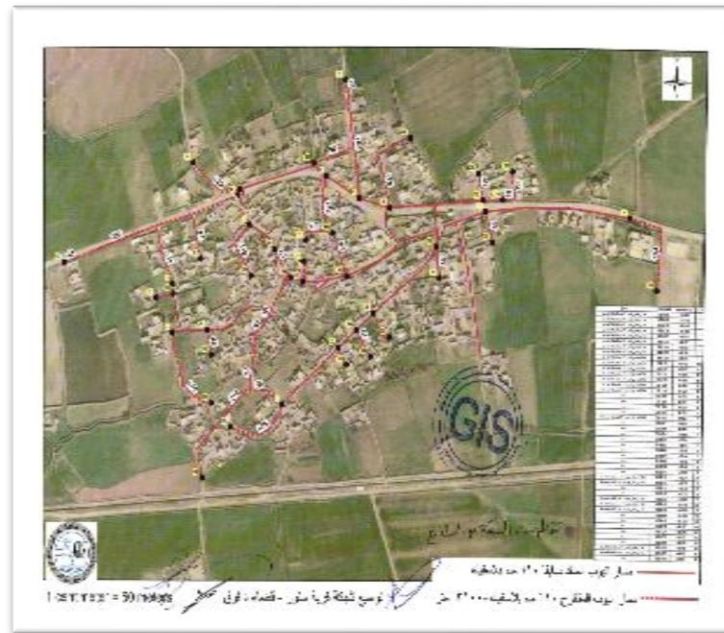


**almakam Village**





**Haod 6 Village**



**Sonor Village**

The anticipated duration of construction works in the villages is about 90 days for water networks with about 10-15 workers per day per site and most of them are local workers and the rest are engineers and technicians. Workers from other villages will need to have their



	<p>accommodation facilities in the camp, during the construction phase. The setup of a camp will be on vacant state-owned lands. Also, storage of equipment and construction materials will be on vacant state-owned lands.</p>
<b>Land Use and Acquisition</b>	<p>The area adjacent to the project's sites are characterized as rural residential and semi desertic to agricultural area. However, the construction activities will not cause an impact on agricultural areas or cause any crop damage.</p> <p>The water network will be constructed on state land and hence there are no issues related to land acquisition and free of encroachers or squatters. The implementation activities will not cause relocation of people, vendors, and any individuals. No sensitive receptors or critical habitats in the footprint or close to sub-project activities.</p>
<b>Contractor's Camp</b>	<p>The construction of water network will need about 10-15 workers per day. Workers are expected to be hired locally, however if a construction camp is deemed necessary, it will be installed on vacant state-owned land. Portable holding tanks will be installed in the subproject, waste will be collected and disposed in an authorized waste treatment plant/authorized disposing site to be determined later by the local municipality.</p> <p>The contractor will establish his storage on vacant state-owned land for equipment and material within the area close to the construction area.</p> <p>The construction camp should have independent sources of water and electricity, and an adequate septic tank for sanitary effluent disposal. Due to its geographical location, an influx of workers to the subproject area is not expected. Most of the workers will be locals from the surrounding areas and will return to their homes.</p>
<b>PROJECT BASELIN CONDITIONS</b>	
<b>Geographic Conditions</b>	<p>The terrain is characterized as flat. In the project area the elevation is about 73m asl. No natural land obstacles are presented in the subproject areas. The subprojects areas are free of mountains, cliffs, and valleys.</p>
<b>Climate, Air Quality and noise</b>	<p>Kirkuk governorate is located in the northern part of Iraq, which has a semi-desertic climate in some districts. The major rain, is about 56 mm yearly, falls during the period November thru April, with a spread showering in May. The temperature ranging from 5 - 43 °C during the year.</p>

	<p>The subproject sites are located in open areas, so the expected concentration of air pollutants is low. Air pollutants in the villages are caused mainly from movement of vehicles and trucks. Therefore, the ambient air quality is expected to be within the WHO ambient air quality standards. (Annex3).</p> <p>Currently, there is no traffic congestion and consequently the existed noise level is within the normal levels.</p>
<b>Hydrogeology Conditions</b>	Flooding of the area near the project has not been reported in the past years.
<b>Ecology Conditions</b>	The project areas do not contain any globally important habitats or ecosystems. There are no Nature Reserves or other legally protected areas in the vicinity of the project or in a close proximity.
<b>Heritage Environment</b>	There are no sites of historical or cultural importance in the area. There are no cemeteries, historical-cultural monuments, churches, mosques near the project that need to be removed or will be impacted due to the construction activities.
<b>Socio-economic Aspects</b>	<p>The population of these projects area is approximately <b>19496</b>.</p> <p>The suggested areas of the roads will be on state land, where no land or property expropriation will be necessary and is free from encroachers or squatters. All the areas around the sites remain clear of any settlement or economic use and are ready for construction works, no interference is registered from the local community which is eager for the works to be completed. It is important to mention that during the construction of the road, it is not expected to cause restriction of access or livelihood impacts. Some of the population have a degree or equivalent to Bachelor level, and some have equivalent to middle school., some of them operating small businesses and they have only a few years of basic education.</p>
<b>LEGISLATION &amp; POLICIES</b>	
<b>National &amp; Local Legislation and World Bank Policies that Apply to the Project</b>	<p>The applicable national legislation is as follows:</p> <ul style="list-style-type: none"> <li>➤ The Law for the Protection and Improvement of Environment No. 27, 2009;</li> <li>➤ Public Health Law No. 89 of 1981, amended by Resolution No.54 of 2001;</li> <li>➤ Law No.3,1997 regarding to Environment protection</li> <li>➤ Instructions No. 2 of 2014 on Environmental Protection from Municipal Waste;</li> <li>➤ Law No. 2 of 2001 on Conservation of Water Resources.</li> <li>➤ Instructions no. 3 of 2015 on Hazardous Waste Management;</li> <li>➤ Law No. 6 of 1988 concerning the National Commission for Occupational Hygiene and Safety;</li> </ul>

- Instructions No. 12 of the year 2016: Occupational Health and Safety;
- Labor Law No. 37 of 2015;
- Law no. 89 of the year 1981, amended by Decree No.54 of 2001: Public Health;
- Law No. 41 for the year of 2015: Noise Protection and Control;
- Public Roads Law No. 35 of 2002;
- Instructions No.3 of 2012: National Emissions’ Determinants for Activities and Businesses by the Ministry of Health and Environment;
- Regulation No. 4 for the year of 2012: Ambient Air Quality;
- World Health Organization (WHO) Guidelines for Drinking Water Quality<sup>2</sup>

The main WB safeguard policies applicable for SFD are:

- OP 4.01 Environmental Assessment
- OP 4.12 Involuntary Resettlement (There might be a probability of storage of construction materials within the project area. Until the date of report development, no land acquisition is anticipated.).
- OP 4.11 Physical and Cultural Resources (The proposed construction activities are not expected to pose risks of damaging cultural property).
- labor influx guidance note (2016).
- WB General Environmental, Health, and Safety guideline<sup>3</sup>

The EHS guidelines entail effective methods for managing environmental, health and safety issues in accordance with WBG requirements. This includes understanding the likelihood, magnitude, and priority of the EHS risks. The EHS guidelines include 4 primary sections and respective subsections (applicable segments from the EHS guidelines for the sub-project are highlighted in **Red**):

1. Environmental Guidelines

- 1) **Ambient Air Quality** – Limits and Guidelines
- 2) **Energy Conservation** – Energy Conservation and Efficiency Methods
- 3) **Water and Sanitation**<sup>4</sup>- The EHS Guidelines for Water and Sanitation include information relevant to the operation and maintenance of (i) potable water treatment and distribution systems, and (ii) collection of sewage in centralized systems (such as piped sewer collection networks) or decentralized systems (such as septic tanks subsequently serviced by pump

<sup>2</sup> <https://www.who.int/publications/i/item/9789241549950>

<sup>3</sup> <https://www.ifc.org/wps/wcm/connect/29f5137d-6e17-4660-b1f9-02bf561935e5/Final%2B-%2BGeneral%2BEHS%2BGuidelines.pdf?MOD=AJPERES&CVID=nPtguVM>

<sup>4</sup> <https://www.ifc.org/wps/wcm/connect/0d8cb86a-9120-4e37-98f7-cfb1a941f235/Final%2B-%2BWater%2Band%2BSanitation.pdf?MOD=AJPERES&CVID=nPtk0wW>

trucks) and treatment of collected sewage at centralized facilities.

- 4) **Wastewater and Ambient Water Quality** – Effluent water quality and indicators for water discharge and treatment
- 5) **Water Conservation** – Methods for ensuring reduction in water consumption
- 6) **Hazardous Material Management** – The appropriate Methods for managing hazardous waste and instructions on community and worker protection
- 7) **Waste Management** – Instructions on waste management and planning, waste prevention and safe waste disposal
- 8) **Noise** – Methods for prevention and control of Noise, and the applicable noise limits for different activities and exposure period
- 9) **Contaminated Land** – Management approaches for contaminated land due to different hazardous substances or waste or oil. Includes Risk Reduction measures

2. Occupational Health and Safety Guidelines<sup>5</sup>

- 1) **General Facility Design and Operation** – ensuring appropriate facility integration of H&S, that integrates safety measures in design for different physical hazards
- 2) **Communication and Training** – Ensuring there is an appropriate level of communication between workers and management, and that there is sufficient training for all workers prior to operations
- 3) **Physical Hazards** – Methods for prevention of accidents or injuries that can occur due to exposure to mechanical or other physical works, including Noise and Vibrations
- 4) **Chemical Hazards** – Injuries and accidents that could occur due to usage of chemicals and methods of protection and prevention. Includes management of fires and explosions
- 5) **Biological Hazards** – Protection and Management of different biological agents
- 6) **Radiological Hazards** – Management and Limits for Radiation Exposure
- 7) **PPE** – Guidance on usage of PPE and clearly highlighting that it should be considered the last resort
- 8) **Special Hazards Environments** – Guidance on Managing different environments that can present a risk to workers such

<sup>5</sup> <https://www.ifc.org/wps/wcm/connect/1d19c1ab-3ef8-42d4-bd6b-cb79648af3fe/2%2BOccupational%2BHealth%2Band%2BSafety.pdf?MOD=AJPERES&CVID=nPtgxyx>

as confined spaces.

- 9) **Monitoring** – Efficient monitoring of occupational health and safety programs and mitigation measures. This includes the Occupational Accident Reporting frequency

3. Community Health and Safety Guidelines<sup>6</sup>

- 1) **Water Quality and Availability** – Ensuring the protection of nearby water resources such as groundwater and surface water sources.
- 2) **Structural Safety of the Project** – Potential Hazards that could occur due to poor design and methodology for dealing with those hazards. Includes the general approach that architects/structural engineers must follow to ensure community safety is considered during design
- 3) **Life and Fire Safety (L&FS)** – Ensuring that building design is in accordance with local regulations and requirements, and that it integrates Fire safety standards (more focused on buildings rather than infrastructure)
- 4) **Traffic Safety** – Includes the potential risks and impacts on traffic and from traffic that occurs due to the project. Includes recommend measures to deal with traffic risk
- 5) **Transport of Hazardous Material** – Approach and Guidelines for transporting hazardous material, including a hazard assessment and emergency response plan.
- 6) **Disease Prevention** – Includes the recommended interventions and methods to protect the community from communicable diseases and vector borne diseases
- 7) **Emergency Response and Preparedness** – This sub section requires a plan and response system in place to respond to any potential emergency that could occur due to the works or operation

4. Construction and Decommissioning Guidelines<sup>7</sup>

- 1) **Environment** – covers the different environmental factors that could be affected by the construction activities including soil erosion, disturbance to water bodies, disturbance to air quality, wastewater discharges etc.
- 2) **Occupational Health and Safety** – Different OHS risks due to construction or decommissioning works

<sup>6</sup> <https://www.ifc.org/wps/wcm/connect/eeb82b4a-e9a8-4ad1-9472-f1c766eb67c8/3%2BCommunity%2BHealth%2Band%2BSafety.pdf?MOD=AJPERES&CVID=nPtgxTd>

<sup>7</sup> <https://www.ifc.org/wps/wcm/connect/7d708218-2a9e-4fcc-879d-9d5051746e7d/4%2BConstruction%2Band%2BDecommissioning.pdf?MOD=AJPERES&CVID=nPtgy6x>

- 3) **Community Health and Safety** – Different Hazards that can occur due to the project and affect the surrounding community.
- 4) Grievance Redress Service

**PUBLIC CONSULTATION & GRIEVANCE REDRESS MECHANISMS**

**Public Consultation Process**

The consultations were carried out in the village for the construction of the subproject the water treatment and the network on the 26<sup>th</sup> December 2021. Due to the COVID-19 pandemic, it was unable to conduct a public consultation. Therefore, one on one interviews, and small focus group sessions were conducted. Accordingly, a questionnaire was formed to cover the key environmental and social aspects related to the subproject.

The purpose of conducting the consultation activities is to achieve the following:

- 1) Discuss project objectives and their subproject activities.
- 2) Disclose information regarding the Grievance Mechanism resources in place.
- 3) Discuss anticipated environmental and social impacts associated with the project.
- 4) Propose extensive mitigation measures to address potential environmental and social risks associated with the project activities.

The formatted questionnaire was then addressed to 27 women and 73 men in the surrounding community randomly to have their opinions and thoughts regarding the subproject's activities.

**Consultation Results:**

All interviewees expressed their hope that the completion of the project will improve their life quality. All those interviewed expressed their support for the project. Therefore, they link the project with improving their living conditions and the development of the area economically. They also stressed the importance of providing a timetable for the completion of the project because they heard of many planned projects in their district but have not seen them being completed. The participants emphasized that they know that the project's benefits are far greater than its negative impacts and confirmed their willingness to cooperate with the project. All participants in the village expressed that the construction of the compact water unit will have a positive impact on their social daily life. Please refer to Annex 1 and Annex 2 for sample of the consultations for both men and women in these villages. The full list of participants for public consultations and individual interviews are attached in standalone document to reduce the size of the instrument. As per the questionnaire prepared for individual interview, the below are the main findings:

- 1) No deportation or dislocation of any of the local community will be

- needed due to these activities.
- 2) No vegetation covers, crops, plants, trees...etc. will be removed in order to execute the construction activities.
- 3) No infrastructure will be affected negatively due to the construction activities.
- 4) The questioned local people agreed that the construction activities will have a strong positive impact from the social perspectives on the local residents.
- 5) No claims from any local population were recorded or alleged regarding the ownership of the land where the construction activities are to take place.

**GRM  
Process**

The Grievance Redress Mechanism is a procedure that aims to facilitate the most satisfactory solution and/or guidance to stakeholders seeking to submit their comments or complaints.

Before the start of the project, local community members will be informed about the GRM via communication channels. For example, they will be informed verbally by their community leader or through social media online. Visible sign boards, hard copies of the GRM brochures, and online platforms will also be made available posting GRM-relevant contact information and an explanation of the grievance process.

The SFD established a central free hotline, and it is functioning properly in addition to the email and WhatsApp application. The digital system with multi-channels for receiving complaints, inquiries, feedback or comments like WhatsApp, Facebook, email and complain boxes for each subproject. Additionally, GRM focal points will be assigned at local level and central level to be in charge of handling complaints. The focal point will maintain a log and report on grievance management, which includes minutes of meetings, resolutions and recommendations as part of an annual project progress report. The information for the central office is:

#	Name	Job Title	Phone Number	E-mail
1	Husam A. Shaael	GRM Team leader	07833344263 07733344263	<a href="mailto:Sfd.grm.iraq@gmail.com">Sfd.grm.iraq@gmail.com</a>

Meanwhile, in order to comply with the WB requirements, SFD has assigned three staffs as focal points with their cell phone numbers to be disseminated at each subproject level for receiving calls and handling complaints. The



contact details will be posted on subproject signboard and the complaint boxes will be installed in each location as shown in the below table.

**Contact Information for GRM**

#	Name	Job Title	Phone Number	E-mail
1	Mohammed Ayden Omar	Head of the authority	07701325356	<a href="mailto:moayden@gmail.com">moayden@gmail.com</a>
2	Oday H. Salman	Env. Officer	0703968015	<a href="mailto:Fphoebe45@gmail.com">Fphoebe45@gmail.com</a>
3	Hussain E. Kurdi	Env. Officer	0771290876	<a href="mailto:Alkrdihsyn311@gmail.com">Alkrdihsyn311@gmail.com</a>
4	Nazar N. Khamees	GRM Officer	07813644316	<a href="mailto:Niznizare3@gmail.com">Niznizare3@gmail.com</a>

The process of managing complaints will be as follows:

The grievance note should be signed and dated by the aggrieved person. Where the affected person is unable to write, s/he should obtain assistance from the community to write the note and mark the letter with his/her thumbprint. Individuals who submit their comments or grievances have the right to request that their name be kept confidential, though this may mean that the social officer in charge of the GRM is unable to provide feedback on how the grievance is to be addressed. However, an anonymous complaint can receive a code and should be investigated appropriately and treated courteously.

After receiving the comments and complaints, they will be summarized and listed in a Complaints/Comments Logbooks, containing the name/group of commenter/complainant, date the comment was received, brief description of issue, information on proposed corrective actions to be implemented (if appropriate), and the date of response sent to the commenter/complainant. Complaints should be sorted out according to complexity; Significantly, the GRM classifies feedback in two categories, high-level and standard, each has its own procedure as explained further below.

**High-Level Feedback**

Feedback received to be categorized as ‘high’ level instances will include issues that meet the following criteria:

- Incidents that caused or may potentially cause significant or great harm to the environment, workers, communities, or natural resources,

including issues of gender-based violence.

- Incidents which entail failure to implement environmental and social measures with significant impacts or repeated non-compliance with E&S policies.
- Incidents for which failure to address may potentially cause significant impacts that are complex and/or costly to reverse; and
- Incidents that may result in fatality or some level of lasting damage or injury.

This type of feedback will be acknowledged, and an investigation will be launched by the PCU/PMO and any other relevant stakeholders within 24 hours during workdays and within 48 hours if the feedback was received over the weekend. It should be noted that some types of incidents, including accidents and fatalities, need to be reported to the World Bank. This guidance is provided in the Environment & Social Incident Response Procedures.

#### **Standard-Level Feedback**

If the identity of the aggrieved person is known and the grievance is classified as 'standard', the acknowledgement of grievance will be within 3 working-days and the response will be within 20 working-days (depending on the type of grievance i.e. high or standard). The GRM Social Officer will keep a grievance log and report on grievance management (i.e. minutes of meeting, recommendations, and resolutions made) as part of annual project progress reports. At the 20 business-day mark, if a complaint/question is still pending, the GRM focal point will provide an update to the aggrieved person and inform them of the reason of delay in resolving their case and provide the date for which a response will be provided.

Aggrieved people who are dissatisfied with the outcome of their complaint can appeal the decision by resubmitting their complaint to the GRM Social Officer within 30 working days of receiving a response to the original submitted grievance. Subsequently, the GRM Social Officer and other relevant personnel have 30 working days to investigate and address the issue. Additionally, the GRM Social Officer has 10 working days to prepare a comprehensive response, including the findings of the investigation and the rationale of the determination. Accordingly, within a maximum of 40 working days, the appeal case should be closed.

Lastly, if the aggrieved person is still not satisfied with the solution provided, s/he has the option to go to court.

Individuals who submit their comments or grievances have the right to request that their name be kept confidential. An anonymous complaint will receive a code and should be investigated appropriately and treated

	<p>courteously. Ensuring confidentiality when dealing with cases of gender-based violence GBV. In order to mitigate the GBV related issues/ complaints, there will be grievance mechanism sensitive to gender by assigning female GRM officer in case of facing any GBV incidents, in addition, all GRM officers/ focal points must be trained on how to handle SEA/SH related grievances.</p> <p>In addition to PMO, the MOP, project offices in governorates, and Community Development Groups (CDGs), the World Bank's Grievance Redress System (GRS) can also be approached for reporting and resolving issues.</p> <p><b><u>Disclosure activities</u></b></p> <p>As soon as the site-specific ESMP gets clearance from the World Bank and approval from the Ministry of planning, the following disclosure procedures will be adapted. A final report, in English and Arabic, will be published on the WB, SFD and Ministry of Planning websites and also will be available locally (such as at local SFD office).</p>
<b>INSTITUTIONAL CAPACITY BUILDING</b>	
<p><b>Will there be any capacity building?</b></p>	<p><input type="checkbox"/> N or <input checked="" type="checkbox"/> Y</p> <p>It is recommended to provide safety training and induction sessions for the workers and engineers who will be employed throughout the construction phase. Moreover, there needs to be more training on GRM implementation in order to ensure its proper functioning in the future.</p>

## PART B: SAFEGUARDS SCREENING AND TRIGGERS

<b>ENVIRONMENTAL /SOCIAL SCREENING FOR SAFEGUARDS TRIGGERS</b>			
	<b>Activity / Typology</b>	<b>Status</b>	<b>Triggered Actions</b>
<p>Will the site activity include/in involve any of the following?</p>	<p>1. Re/construction of compact water unit</p>	<p><input checked="" type="checkbox"/> Yes <input type="checkbox"/> No</p>	<p>This subproject is construction of compact water unit and water networks.</p>
	<p>2. Reconstruction of / impacts on surface drainage system</p>	<p><input type="checkbox"/> Yes <input checked="" type="checkbox"/> No</p>	<p>The subproject doesn't have an impact on Surface drainage system</p>
	<p>3. Activities in Historic building(s) and districts</p>	<p><input type="checkbox"/> Yes <input checked="" type="checkbox"/> No</p>	<p>The construction activities do not take place anywhere near historic buildings or districts and</p>
	<p>4. Required acquisition of land or temporary / permanent impacts on livelihoods</p>	<p><input type="checkbox"/> Yes <input checked="" type="checkbox"/> No</p>	<p>No land acquisition is required for this subproject as the activities will be constructed on state owned land.</p>
	<p>5. Handling or presence of hazardous or toxic materials</p>	<p><input checked="" type="checkbox"/> Yes <input type="checkbox"/> No</p>	<p>There are toxic or hazardous materials generated by the project.</p>
	<p>6. Impacts on forests and/or protected areas</p>	<p><input type="checkbox"/> Yes <input checked="" type="checkbox"/> No</p>	<p>There are no forests or protected areas surrounding the subproject area.</p>
	<p>7. Risk of unexploded ordinance (UXO)</p>	<p><input type="checkbox"/> Yes <input checked="" type="checkbox"/> No</p>	<p>An official clearance letter has been provided by authorities (Annex 4).</p>

## PART C: ENVIRONMENTAL AND SOCIAL MANAGEMENT PLAN (ESMP) FOR THE SUBPROJECT PHASES

Receptor/ EHS Aspect	Impact	Mitigation Measures	Means of Supervision	Responsibility		Estimated Cost
				Implementatio n	Supervision	
<b>Construction Phase</b>						
Air Quality <sup>8</sup>	Dust and exhaust emissions	<ul style="list-style-type: none"> <li>• Have a maintenance plan for the construction equipment to minimize exhaust emissions.</li> <li>• Adopt a policy of switching off machinery and equipment when not in use (idle mode).</li> <li>• Spray the soil before and during excavation activities, if necessary, to reduce dust emissions.</li> <li>• Store construction materials in pre-identified storage areas. For example, any excavated material must remain in a confined area until disposal from site.</li> <li>• Set an appropriate speed limit (typically 10-15 km/h) for the vehicles operating within the site boundaries.</li> <li>• Demolition debris, excavated soil and aggregates shall be kept in controlled area and sprayed with water mist to reduce debris dust when necessary</li> <li>• There will be no open burning of construction / waste material at the</li> </ul>	<ul style="list-style-type: none"> <li>• Site inspection</li> <li>• Review equipment maintenance records.</li> <li>• Review the complaints reports</li> </ul>	Contractor	Resident Engineer / the assigned E&S specialists from PMT	Within contractor's cost

<sup>8</sup> <https://www.ifc.org/wps/wcm/connect/4e01e089-ad1a-4986-b955-e19e1f305ff0/1-1%2BAir%2BEmissions%2Band%2BAmbient%2BAir%2BQuality.pdf?MOD=AJPERES&CVID=nPtgvbS>

Receptor/ EHS Aspect	Impact	Mitigation Measures	Means of Supervision	Responsibility		Estimated Cost
				Implementatio n	Supervision	
		<p>site.</p> <ul style="list-style-type: none"> <li>• Providing some indigenous species of vegetation, which will also reduce dust level.</li> <li>• Demolition debris, excavated soil and aggregates shall be kept in controlled area and sprayed with water mist to reduce debris dust when necessary</li> <li>• proper stacking of material and avoiding excavation or other activities during high wind periods.</li> </ul>				
Noise <sup>9</sup>	The operation of heavy construction equipment will lead to an increase in ambient noise levels.	<ul style="list-style-type: none"> <li>• Switch off any equipment if not in use.</li> <li>• Ensure that machinery is in good condition by implementing a maintenance plan.</li> <li>• Construction noise will be limited to restricted times agreed to in the permit</li> </ul>	<p>Site inspection</p> <p>Review the equipment maintenance records.</p> <p>Review complaints/ grievance log.</p>	Contractor	Resident Engineer / the assigned E&S specialists from PMT	Within contractor's cost
Waste Generation	Inappropriate handling of hazardous or non-hazardous waste can lead to soil contamination.	<p>Implement a waste management plan consisting of the following measures.</p> <p><b>For solid waste:</b></p> <ul style="list-style-type: none"> <li>• Identify waste types and quantities</li> <li>• Allocate a skip/bin to each type of waste</li> <li>• Create a confined area on site to store</li> </ul>	<p>Field investigations</p> <ul style="list-style-type: none"> <li>• Review waste register.</li> <li>Review the complaints</li> </ul>	Contractor	Resident Engineer / the assigned E&S specialists from PMT	Within contractor's cost

<sup>9</sup> <https://www.ifc.org/wps/wcm/connect/4a4db1c5-ee97-43ba-99dd-8b120b22ea32/1-7%2BNoise.pdf?MOD=AJPERES&CVID=nPtgwZY>

Receptor/ EHS Aspect	Impact	Mitigation Measures	Means of Supervision	Responsibility		Estimated Cost
				Implementatio n	Supervision	
	Also, not removing domestic waste on a periodic basis will lead to its accumulation and consequently to significant bacterial presence on site.	<p>excavated material, if there is a need to.</p> <ul style="list-style-type: none"> <li>• Allocate a space on site to store construction debris and scrap material such as old pipes, broken doors and windows.</li> <li>• Contract a licensed solid waste contractor/scrap dealer to collect domestic waste on a daily basis and other scrap waste also on a regular basis.</li> <li>• The waste management areas must be part of the construction site and should not interfere with any activities outside the boundaries of the subproject.</li> <li>• Procedures will be put in place for rapid response to accidental spills of fuels, lubricants and other toxic or noxious substances, and for their recovery and appropriate disposal.</li> <li>• The excavated soil resulting from the digging will be used for backfilling and compacted very well. However, if any surplus materials (excavated soil) will remain, there is a need to coordinate with the municipal local authority to properly dispose of the remaining material.</li> </ul> <p><b>For Hazardous waste and substances:</b></p> <ul style="list-style-type: none"> <li>• If there will be a diesel tank on site, it must be shaded and placed on an impervious surface such as concrete.</li> </ul>	reports.			

Receptor/ EHS Aspect	Impact	Mitigation Measures	Means of Supervision	Responsibility		Estimated Cost
				Implementatio n	Supervision	
		<ul style="list-style-type: none"> <li>• Store used oils in barrels until final disposal and place them on a retention basin.</li> <li>• Contract a hazardous waste contractor to collect the hazardous waste and transport it to an authorized facility/dumping site, which will be identified by local authorities.</li> <li>• Safe handling using the proper PPEs and safety precautions.</li> <li>• Make a register of the quantities that have been disposed of.</li> </ul> <p><b>For Liquid waste:</b></p> <ul style="list-style-type: none"> <li>• The holding tank connected to the site offices must be emptied on a frequent basis by a licensed waste company.</li> </ul>				
Water Pollution	Surface water may be polluted by improper waste handling, given that the Euphrates river is only 100 m away.	<ul style="list-style-type: none"> <li>• The contractor must follow the solid and hazardous waste mitigation measures presented in this ESMP to limit the possibility of water pollution that may result from inappropriate handling of waste.</li> <li>• No washing, maintenance or service of vehicles and machinery close to water bodies.</li> <li>• The contractor must follow the solid and hazardous waste mitigation measures presented in this ESMP to limit the possibility of water pollution that may result from</li> </ul>	Field investigation	contractor	Resident Engineer / the assigned E&S specialists from PMT	Within contractor's cost



Receptor/ EHS Aspect	Impact	Mitigation Measures	Means of Supervision	Responsibility		Estimated Cost
				Implementatio n	Supervision	
		<p>inappropriate handling of waste.</p> <ul style="list-style-type: none"> <li>• Construction material and stockpiles should be covered to avoid run-off to water bodies.</li> <li>• Wastewater from the worker rest areas or construction offices should be contained in septic tank and should be removed regularly from site by the authorized wastewater trucks</li> <li>• In case of the need to change engine, oils or refuel some construction equipment, a proper maintenance workshop or shelter should be installed to ensure containment of any fuel or oil spills.</li> </ul>				
Soil	Contamination through leakages from equipment, holding tanks or chemical containers improper disposal of solid or hazardous waste.	<ul style="list-style-type: none"> <li>• The contractor must follow the solid and hazardous waste mitigation measures presented in this ESMP to minimize the possibility of leakages to the soil. Other measures to minimize soil contamination include:</li> <li>• Adopting strict spill control procedures and developing a spill response and management plan.</li> <li>• Storing oil and chemical materials in an appropriate location that has a protective base and a lip, such as a concrete slab, to prevent any penetration into the ground.</li> <li>• Reuse the excavated soil when it deemed technically appropriate.</li> <li>• Preventing loose material (soil and</li> </ul>	Field investigation	Contractor	Resident Engineer / the assigned E&S specialists from PMT	Within contractor's cost

Receptor/ EHS Aspect	Impact	Mitigation Measures	Means of Supervision	Responsibility		Estimated Cost
				Implementatio n	Supervision	
		<p>equipment) from falling or rolling into the excavation by removing this material to a minimum of 0.5 meter from the edge of the excavation</p> <ul style="list-style-type: none"> <li>• Marking excavation with physical boundaries (barriers, tape or fence).</li> <li>• Follow the solid and hazardous waste mitigation measures presented in this ESMP to minimize the possibility of leakages to the soil.</li> <li>• Restoration of topsoil and damaged areas must take place after construction phase end.</li> <li>• Ensure appropriate and safe storage of containments such as fuels, construction materials and wastes.</li> </ul>				
Workers safety	Occupational health and safety	<ul style="list-style-type: none"> <li>• The Contractor shall prepare an Occupational Health and Safety Plan and job hazard instructions during the construction phase.</li> <li>• The contractor will also assign a competent person to supervise the plan. Some of the main mitigations measures that must be included in the plan are as follows:</li> <li>• Workers should be trained to identify and evaluate fall hazards and be fully aware of how to control exposure to such risks.</li> <li>• Workers and site personnel must always use personal protective equipment when dealing with toxic material.</li> </ul>	<ul style="list-style-type: none"> <li>• Contractual clauses + Field supervision</li> </ul>	Contractor's health and safety officers	Resident Engineer/ the assigned E&S specialists from PMT	Within contractor's cost

Receptor/ EHS Aspect	Impact	Mitigation Measures	Means of Supervision	Responsibility		Estimated Cost
				Implementatio n	Supervision	
		<ul style="list-style-type: none"> <li>Workers must comply with OSHA’s general rule for the safe use of ladders.</li> <li>To prevent heavy construction equipment risk, workers should follow construction safety guidelines designed to eliminate the exposure to such injuries and accidents</li> <li>Emergency equipment (spill-kit, fire extinguishers, etc..) must always be available on-site and functional.</li> <li>Initial and periodic health checks must be provided to the workers.</li> <li>The plan must include Covid-19 response measures.</li> <li>Workers must be provided with health care insurance (that covers provision of medical support in case of being infected by diseases) and safety insurance (that covers workers in case of incidents and accidents)</li> <li>Suitable working platforms, with suitable guard rails and toe boards, should be provided for work at height. Safe means of access and egress should be provided for the working platform.</li> <li>Suitable guard-rails and toe-boards should be installed at edges. Openings should be properly covered where persons are liable to fall from height, to land surfaces or into water.</li> </ul>				

Receptor/ EHS Aspect	Impact	Mitigation Measures	Means of Supervision	Responsibility		Estimated Cost
				Implementatio n	Supervision	
		<ul style="list-style-type: none"> <li>• Install railing around all process tanks and pits. Require use of a life line and personal flotation device (PFD) when workers are inside the railing, and ensure rescue buoys and throw bags are readily available;</li> <li>• Implement a confined spaces entry program that is consistent with applicable national requirements and internationally accepted standards. 21 Valves to process tanks should be locked to prevent accidental flooding during maintenance;</li> <li>• Use fall protection equipment when working at heights;</li> <li>• Maintain work areas to minimize slipping and tripping hazards;</li> <li>• Use proper techniques for trenching and shoring;</li> <li>• Implement fire and explosion prevention measures in accordance with internationally accepted standards;</li> <li>• When installing or repairing mains adjacent to roadways, implement procedures and traffic controls, such as: <ul style="list-style-type: none"> <li>o Establishment of work zones so as to separate workers from traffic and from equipment as much as possible</li> <li>o Reduction of allowed vehicle speeds in work zones;</li> <li>o Use of high-visibility safety apparel for workers in the vicinity of traffic</li> <li>o</li> </ul> </li> </ul>				

Receptor/ EHS Aspect	Impact	Mitigation Measures	Means of Supervision	Responsibility		Estimated Cost
				Implementatio n	Supervision	
		<p>For night work, provision of proper illumination for the work space, while controlling glare so as not to blind workers and passing motorists</p> <ul style="list-style-type: none"> <li>• Locate all underground utilities before digging.</li> <li>• Installation of guardrails with mid-rails and toe boards at the edge of any fall hazard area</li> <li>• Proper use of ladders and scaffolds by trained employees.</li> <li>• Use of fall prevention devices, including safety belt and lanyard travel limiting devices to prevent access to fall hazard area, or fall protection devices such as full body harnesses used in conjunction with shock absorbing lanyards or self retracting inertial fall arrest devices attached to fixed anchor point or horizontal life-lines</li> <li>• Appropriate training in use, serviceability, and integrity of the necessary PPE .</li> <li>• Inclusion of rescue and/or recovery plans, and equipment to respond to workers after an arrested fall.</li> <li>• Make sure all walking areas and work surfaces are clean, dry, clear of debris, etc.</li> <li>• Keep all gear secure when not in use.</li> <li>• Keep stairs, ladders, doorways, ramps, walkways, and gangways</li> </ul>				

Receptor/ EHS Aspect	Impact	Mitigation Measures	Means of Supervision	Responsibility		Estimated Cost
				Implementatio n	Supervision	
		<p>clear.</p> <ul style="list-style-type: none"> <li>• Safely secure ramps or gangways when loading and offloading.</li> <li>• Wear footwear with slip-resistant soles.</li> <li>• Eliminate unusable impounded water, and apply vector control programs</li> <li>• Erect suitable and adequate warning signage along culvert cleaning and excavation sites</li> <li>• Signs and awareness should be installed close to the excavation area to protect road users and community.</li> </ul>				
Local Communit y <sup>10</sup>	Community health and safety	<ul style="list-style-type: none"> <li>• Prepare and implement a security plan to prevent public access to the work site, hazardous materials, and waste</li> <li>• The contractor must abide by the waste management plan in order not to negatively affect the safety of the surrounding communities.</li> <li>• A grievance mechanism should be provided to ensure effective communication regarding community concerns</li> <li>• People with disability and school children should be provided with safe access roads to their schools and</li> </ul>	<ul style="list-style-type: none"> <li>• - Grievance s log</li> <li>• - Accidents log</li> </ul>	Contractor	Resident Engineer / the assigned E&S specialists from PMT'	Within contractor's cost

<sup>10</sup> <https://www.ifc.org/wps/wcm/connect/1d19c1ab-3ef8-42d4-bd6b-cb79648af3fe/2%2BOccupational%2BHealth%2Band%2BSafety.pdf?MOD=AJPERES&CVID=nPtgxyx>

Receptor/ EHS Aspect	Impact	Mitigation Measures	Means of Supervision	Responsibility		Estimated Cost
				Implementatio n	Supervision	
		commercial areas, particularly, as the project will dig streets. Safe access roads can be provided with lights in order to avoid falls of pedestrians during night.				
Local Communit y	Traffic safety	<ul style="list-style-type: none"> <li>• Safety signs must be installed to notify the community that construction vehicles will be using the roads leading to the water units</li> <li>• The contractor must set a speed limit for construction vehicles while they operate outside the site boundaries.</li> </ul>	<ul style="list-style-type: none"> <li>• Accidents log</li> <li>• Community grievance mechanism</li> </ul>	Contractor in coordination with the traffic department	Resident Engineer / the assigned E&S specialists from PMT	Within contractor's cost
Local Communit y	Child Labour	<ul style="list-style-type: none"> <li>• The ToR of the contractor must prohibit all forms of child labor in the subproject (below 18 years old) and specify the appropriate penalties.</li> <li>• The ToR shall also oblige the contractor/subcontractor to keep a copy of IDs of workers in order to monitor their age.</li> </ul>	<ul style="list-style-type: none"> <li>• Workers attendance sheets</li> </ul>	Contractor	Resident Engineer/ the assigned E&S specialists from PMT	Within contractor's cost
Local Communit y	Cultural heritage	<ul style="list-style-type: none"> <li>• Chance find procedures are included in Annex 5 in order to provide guidance in case of finding any cultural heritage objects</li> </ul>	<ul style="list-style-type: none"> <li>• The chance find procedures are available</li> </ul>	Contractor	Resident Engineer/ the assigned E&S specialists from PMT	Within contractor's cost
Local Communit y	Temporary labour influx	<ul style="list-style-type: none"> <li>• Prepare a code of conduct that stipulates the different commitments of labour towards community groups. The CoC must be signed by the contractor.</li> <li>• All workers should be trained on the</li> </ul>	<ul style="list-style-type: none"> <li>• Site visit</li> <li>• Monthly reporting</li> <li>• GRM</li> <li>• Meetings with</li> </ul>	Contractor	Resident Engineer/ the assigned E&S specialists from PMT	Within contractor's cost



Receptor/ EHS Aspect	Impact	Mitigation Measures	Means of Supervision	Responsibility		Estimated Cost
				Implementatio n	Supervision	
		<p>Code of Conduct.</p> <ul style="list-style-type: none"> <li>• Apply Penalties to workers who violate the code of conduct</li> <li>• Ensure smooth operation of the grievance mechanism and the anonymous channels</li> <li>• Raise the local population's awareness about the subproject's commitment towards communities, and the measures taken through public consultation and focus group discussions</li> <li>• Conduct initial and periodic health check-ups on workers and provide the necessary care accordingly</li> </ul>	surroundi ng communit ies			
Local Communit y	GBV	<ul style="list-style-type: none"> <li>• The code of conduct (CoC) must include the prevention of sexual exploitation and sexual harassment at the workplace</li> <li>• CoC needs to consider privacy in setting up the household connections.</li> <li>• Maintain an efficient gender sensitive grievance mechanism for both local community and workers.</li> </ul>	<ul style="list-style-type: none"> <li>• Monthly reporting</li> <li>• GRM</li> </ul>	Contractor	Resident Engineer/ the assigned E&S specialists from PMT	Within contractor's cost
Local Communit y	Infrastructure and underground utilities	<ul style="list-style-type: none"> <li>• Coordinate with the departments of potable water, wastewater, electricity, and telecom authorities to obtain maps/ data on underground utilities, whenever available</li> <li>• In case an underground utility and infrastructure pipe is subjected to</li> </ul>	<ul style="list-style-type: none"> <li>• Review infrastruc ture accidents reports.</li> </ul>	Contractor	Resident Engineer / PMT	Within contractor's cost

Receptor/ EHS Aspect	Impact	Mitigation Measures	Means of Supervision	Responsibility		Estimated Cost
				Implementatio n	Supervision	
		<p>damage by the subproject activities, standard procedures should be followed, in addition to preparing a documentation report for the accident.</p> <ul style="list-style-type: none"> <li>• In case of water outage, the community people should be informed prior to any cut to store water.</li> <li>• Maintain an efficient grievance mechanism.</li> <li>• In case an underground utility and infrastructure pipe has been damaged, standard procedures should be followed, as described before, in addition to preparing a documentation report for the accident. The documentation report should include: <ul style="list-style-type: none"> <li>- Time and place of accident;</li> <li>- Name of contractor;</li> <li>- Type of underground utilities and infrastructure line;</li> <li>- Description of accident circumstances and causes;</li> <li>- Actions taken and responses of different parties, such as infrastructure company;</li> <li>- Duration of fixing the damage; and</li> <li>- Damage caused (description shall be according to observation, expertise judgment, reports of infrastructure company)</li> </ul> </li> </ul>				

Receptor/ EHS Aspect	Impact	Mitigation Measures	Means of Supervision	Responsibility		Estimated Cost
				Implementatio n	Supervision	
		Quick restoration and effective communication with regarding work and restoration schedule				
Workers	Management of onsite facilities	<ul style="list-style-type: none"> <li>• Establish the caravans inside water unit site.</li> <li>• Ensure installation of adequate workers facilities for the construction phase; i.e. construct a holding tank to be used to collect domestic wastewater generated by the workers.</li> <li>• Follow the waste management best practices and mitigation measures outlines in this ESMP.</li> <li>• Monitor closely the working conditions, and impose measures that control transmission of infectious diseases.</li> <li>• Maintain an efficient grievance mechanism (discussed in the stakeholder engagement chapter). This GRM should be sensitive to gender and assure confidentiality</li> <li>• Specific engagement with women and girls that includes awareness on GBV and access to anonymous channels to report cases.</li> <li>• Train workers on the Code of Conduct and keep close eye on any violation of the COC</li> <li>• A list of recommendations, instructions, and restrictions will have to be prepared to minimize the</li> </ul>	<ul style="list-style-type: none"> <li>• Site inspections</li> </ul>	Contractor	Resident Engineer/ the assigned E&S specialists from PMT	Within contractor's cost

Receptor/ EHS Aspect	Impact	Mitigation Measures	Means of Supervision	Responsibility		Estimated Cost
				Implementatio n	Supervision	
		<p>negative ecological and social impact of the workers facilities and the restoration of the site after the construction phase.</p> <ul style="list-style-type: none"> <li>• Provide for appropriate amenities (eating, provision of drinking water, prayer etc).</li> </ul>				
<b>Operation Phase</b>						
Air Quality	Exhaust and Particulate matter emissions from generator(s) Chlorine gas has a temporary negative impact on air quality	<ul style="list-style-type: none"> <li>• Maintain generators regularly</li> <li>• Using generators in case of emergency only</li> <li>• Ensure appropriate ventilation at chlorine storage area</li> <li>• Ensure chlorine container are sealed properly during storage time</li> </ul>	Site inspection	The manager of the water unit	Maysan Water Directorate	Operation cost
Noise <sup>11</sup>	Pumps and generators (used temporary) generate noise levels felt by workers and nearest neighbors	<ul style="list-style-type: none"> <li>• Using rubber padding when applicable to reduce noise and vibration from operating machines</li> <li>• Performing regular maintenance and monitor lubrication levels of all compact unit machinery</li> <li>• Equipping backup generators with silencers</li> </ul>	Site visit reports Incidents and accidents reports	The manager of the water unit	Maysan Water Directorate	Operation cost
Waste Generation	Inappropriate handling of solid and liquid waste	<ul style="list-style-type: none"> <li>• Domestic waste must be collected in bins and collected by the municipality.</li> </ul>	Field investigations	The manager of the water unit	Maysan Water Directorate	Operation cost

<sup>11</sup> <https://www.ifc.org/wps/wcm/connect/4e01e089-ad1a-4986-b955-e19e1f305ff0/1-1%2BAir%2BEmissions%2Band%2BAmbient%2BAir%2BQuality.pdf?MOD=AJPERES&CVID=nPtgvbS>

Receptor/ EHS Aspect	Impact	Mitigation Measures	Means of Supervision	Responsibility		Estimated Cost
				Implementatio n	Supervision	
		<ul style="list-style-type: none"> <li>• The domestic wastewater will be discharged into a holding tank and then collected by municipal trucks.</li> <li>• A waste collector/scrap dealer must be contracted to collect the empty oil cans and chlorine containers.</li> <li>• Maintain a waste register</li> <li>• Store hazardous waste, such as paint cans and empty chlorine containers in separate skips/waste containers.</li> <li>• Minimize the quantity of solids generated by the water treatment process through optimizing coagulation processes;</li> <li>• Dispose of sludge (resulting from the removal of suspended solids and dissolved contaminants) by land application if allowed, in coordination with the local authority;</li> <li>• Potential impact on soil, groundwater, and surface water, in the context of protection, conservation and long term sustainability of water and land resources, should be assessed when land is used as part of any waste or wastewater treatment</li> </ul>	<p>Review waste register. Review the complaints reports.</p>			

Receptor/ EHS Aspect	Impact	Mitigation Measures	Means of Supervision	Responsibility		Estimated Cost
				Implementatio n	Supervision	
		system; ·				
Water Pollution	Chlorine spills or inappropriate handling of solid and liquid waste	<p><b>Chlorine Gas Safety Measures</b></p> <ul style="list-style-type: none"> <li>• Chlorine drums must have adequate shelving in a well-ventilated area that is protected from the weather and sun exposure and ideally located downwind of commonly used structures and areas.</li> <li>• Provision of a proper secondary containment area or as a spill control measures.</li> <li>• The drums must be properly sealed and kept away from incompatible and flammable materials. Drums should be inspected upon receipt for structural integrity.</li> <li>• Chlorine detection devices should be installed inside the storage room and chlorine injection room.</li> <li>• The chlorine injection area and storage room must be equipped with a ventilator to prevent high chlorine gas concentrations inside the room.</li> <li>• Workers who operate the chlorine facility must always wear a chemical protective mask when handling chlorine to minimize exposure.</li> <li>• Installation of chlorine showers and maintained to be fully functional in</li> </ul>	Field investigations . Review waste register. Review the complaints reports.	The manager of the water unit	Maysan Water Directorate	Operation cost

Receptor/ EHS Aspect	Impact	Mitigation Measures	Means of Supervision	Responsibility		Estimated Cost
				Implementatio n	Supervision	
		<p>case of spill.</p> <ul style="list-style-type: none"> <li>• Employees should be adequately trained in hazard awareness, detection and safe handling procedures to minimize potential spills.</li> <li>• Ensure chlorine containers are always sealed properly and secured from tipping/falling/damage/direct sunlight during transportation and storage</li> <li>• No washing, maintenance or service of vehicles and machinery close to water bodies.</li> <li>• Store hazardous waste, such as paint cans and empty chlorine containers in separate skips/waste containers.</li> <li>• Store used oils in barrels until final disposal and place them on a retention basin.</li> <li>• Contract a hazardous waste contractor to collect the hazardous waste and transport it to an authorized facility/dumping site, which will be identified by local authorities.</li> <li>• Maintain a waste register</li> <li>• In case of the need to change engine, oils or refuel some construction equipment, a proper maintenance workshop or shelter should be installed to ensure containment of</li> </ul>				



Receptor/ EHS Aspect	Impact	Mitigation Measures	Means of Supervision	Responsibility		Estimated Cost
				Implementatio n	Supervision	
		any fuel or oil spills.				
Impacts on soil	Contamination caused by possible leakages or spills	<ul style="list-style-type: none"> <li>• Chemicals storage in areas with impervious floor</li> <li>• Ensure liquid material/waste containers are always sealed properly and secured from tipping/falling/damage/direct sunlight during transportation and storage</li> <li>• In case of spillage: avoid inhalation and sources of ignition, cover and mix with sufficient amounts of sand using PPE, collect contaminated sand in clearly marked secure containers/bags</li> </ul>	Site visit reports Incidents and accidents reports	The manager of the water unit	Maysan Water Directorate	Operation cost
Workforce	OHS	<p>The Component owner will adhere to the following OHS procedures:</p> <ul style="list-style-type: none"> <li>• The use of PPE during operating the treatment unit</li> <li>• Maintain good housekeeping standard</li> <li>• Maintain site security and safety.</li> <li>• Provision of adequate firefighting equipment</li> <li>• Inform all who may be affected by the application of water cleaning of the work arrangements and the safety measures to be taken.</li> <li>• Limit the workers exposure to particle matter and dust emissions for extended periods by using respirators</li> </ul>	Site visit reports Incidents and accidents reports	The manager of the water unit	Maysan Water Directorate	Operation cost

Receptor/ EHS Aspect	Impact	Mitigation Measures	Means of Supervision	Responsibility		Estimated Cost
				Implementatio n	Supervision	
		<p>and shift rotations.</p> <ul style="list-style-type: none"> <li>• Strictly adhere to the operational safety guidelines and the instructions on chlorine packages.</li> <li>• Wash hands, face and skin that may be contaminated chemicals with water and soap.</li> <li>• Develop occupational health and safety plan.</li> <li>• Develop emergency plans</li> <li>• Develop COVID-19 risk-based procedures tailored to site conditions and workers characteristics, and based on guidance issued by relevant authorities, both national and international (e.g. WHO).</li> <li>• Training of workers for the management of the system, safety management, and actions in case of an accident should be implemented.</li> </ul>				
Local Communit y	Community Health and Safety	<ul style="list-style-type: none"> <li>• Emergency response plan should be prepared in case of any water contamination.</li> <li>• Maintain an efficient grievance mechanism.</li> <li>• Conduct quarterly community meetings to observe any concerns they may have.</li> <li>• Conduct quarterly meetings with the concerned authorities to monitor the</li> </ul>	Site visit reports Incidents and accidents reports	The manager of the water unit	Maysan Water Directorate	Operation cost

Receptor/ EHS Aspect	Impact	Mitigation Measures	Means of Supervision	Responsibility		Estimated Cost
				Implementatio n	Supervision	
		<p>quality of reducing the impacts of dust.</p> <ul style="list-style-type: none"> <li>• That treated water quality must meet the WHO Guidelines (as indicated in the EHS Guidelines)</li> <li>• The treatment plant will be designed to meet the standards of EHS.</li> <li>• Quality control and quality assurance system will be in place, the transmission and distribution network will be properly protected from contamination through maintaining adequate pressures and monitoring system ... etc.</li> <li>• Ensure quarterly community meetings will include beneficiary households of new water network.</li> </ul>				
storage and handling of chemicals and other materials	OHS	<ul style="list-style-type: none"> <li>• Install alarm and safety systems, including automatic shutoff valves, that are automatically activated when a chlorine release is detected</li> <li>• Install containment and scrubber systems to capture and neutralize chlorine should a leak occur o</li> <li>• Use corrosion-resistant piping, valves, metering equipment, and any other equipment coming in contact with gaseous or liquid chlorine, and keep this</li> </ul>	Site visit reports Incidents and accidents reports	The manager of the water unit	Maysan Water Directorate	Operation cost

Receptor/ EHS Aspect	Impact	Mitigation Measures	Means of Supervision	Responsibility		Estimated Cost
				Implementatio n	Supervision	
		<p>equipment free from contaminants, including oil and grease</p> <ul style="list-style-type: none"> <li>• Store chlorine away from all sources of organic chemicals, and protect from sunlight, moisture, and high temperatures</li> <li>• Minimize the amount of chlorination chemicals stored on site while maintaining a sufficient inventory to cover intermittent disruptions in supply;</li> <li>• For systems that use gas chlorination: <ul style="list-style-type: none"> <li>o Install alarm and safety systems, including automatic shutoff valves, that are automatically activated when a chlorine release is detected</li> <li>o Install containment and scrubber systems to capture and neutralize chlorine should a leak occur</li> <li>o Use corrosion-resistant piping, valves, metering equipment, and any other equipment coming in contact with gaseous or liquid chlorine, and keep this equipment free from contaminants, including oil and grease</li> <li>o Store chlorine away from all sources of organic chemicals, and protect from sunlight, moisture, and high</li> </ul> </li> </ul>				

Receptor/ EHS Aspect	Impact	Mitigation Measures	Means of Supervision	Responsibility		Estimated Cost
				Implementatio n	Supervision	
		temperatures				

## **PART D: MONITORING PLAN/ CONSTRUCTION PHASE**

---

Receptor/EH S aspect	Monitoring indicators	Respo nsibili ty of monit oring	Frequency of monitoring	Location of monitoring	Methods of monitoring	Estimated Cost of monitoring
<b>Construction Phase</b>						
Air Quality <sup>12</sup>	<ul style="list-style-type: none"> <li>- Number of complaints related to air quality.</li> <li>- Compliance with dust abatement measures</li> </ul>	Resident Engineer & PMT, contractor	Bi-weekly, or as soon as complaints are received	- Near excavation and backfilling activities.	<ul style="list-style-type: none"> <li>- Site inspection</li> <li>- Following up with complaints</li> </ul>	No additional cost

<sup>12</sup> <https://www.ifc.org/wps/wcm/connect/4e01e089-ad1a-4986-b955-e19e1f305ff0/1-1%2BAir%2BEmissions%2Band%2BAmbient%2BAir%2BQuality.pdf?MOD=AJPERES&CVID=nPtgvbS>

Receptor/EHS aspect	Monitoring indicators	Responsibility of monitoring	Frequency of monitoring	Location of monitoring	Methods of monitoring	Estimated Cost of monitoring
Noise & Vibration <sup>13</sup>	<ul style="list-style-type: none"> <li>- Noise level</li> <li>- Number of complaints related to high noise levels.</li> </ul>	Resident Engineer & PMT, contractor	Bi-weekly, or as soon as complaints are received	On site	<ul style="list-style-type: none"> <li>- Site inspection</li> <li>- Complaints log</li> </ul>	No additional cost
Solid and Liquid waste	<ul style="list-style-type: none"> <li>- Waste segregation</li> <li>- Storage conditions of hazardous waste and materials;</li> <li>- Disposal receipts</li> <li>- Condition of the holding tank</li> </ul>	Resident Engineer & PMT, contractor	Bi-weekly	<ul style="list-style-type: none"> <li>- Waste areas on site</li> <li>- Holding tank</li> </ul>	<ul style="list-style-type: none"> <li>- Site inspection</li> <li>- Checking waste register</li> </ul>	No additional cost
Water Pollution	<ul style="list-style-type: none"> <li>- Signs of inappropriate waste disposal (including hazardous waste and materials).</li> </ul>	Resident Engineer & PMT, contractor	Monthly	Euphrates	<ul style="list-style-type: none"> <li>- Visual inspection</li> <li>- Documentation in H&amp;S monthly reports</li> </ul>	No additional cost
Soil	<ul style="list-style-type: none"> <li>- Signs of spillage of hazardous materials</li> </ul>	Resident Engineer &	Bi-weekly	Within site boundaries	<ul style="list-style-type: none"> <li>- Site inspection</li> <li>- Documentation in H&amp;S monthly reports</li> </ul>	No additional cost

<sup>13</sup> <https://www.ifc.org/wps/wcm/connect/4e01e089-ad1a-4986-b955-e19e1f305ff0/1-1%2BAir%2BEmissions%2Band%2BAmbient%2BAir%2BQuality.pdf?MOD=AJPERES&CVID=nPtgvbS>

Receptor/EH S aspect	Monitoring indicators	Responsibility of monitoring	Frequency of monitoring	Location of monitoring	Methods of monitoring	Estimated Cost of monitoring
		PMT, contractor				
Occupational Health and safety <sup>14</sup>	<ul style="list-style-type: none"> <li>- An Occupational Health and Safety Plan is in place</li> <li>- Availability of a competent supervisor</li> <li>- Availability of an accident log</li> <li>- Number of accidents and injuries on site.</li> <li>- Worker's health checkups</li> <li>- Total number of trained workers</li> <li>- Complaints raised by workers</li> <li>-</li> </ul>	Resident Engineer & PMT, contractor	Monthly inspections	Subproject site in general	<ul style="list-style-type: none"> <li>Maintaining records of injuries and accidents with cause and location</li> <li>- Maintaining record recurring health conditions if any</li> </ul>	No additional cost
Community health and safety	<ul style="list-style-type: none"> <li>- Number of accidents and injuries involving local community.</li> <li>- Presence of warning signs in and around the site.</li> </ul>	Resident Engineer & PMT, contractor	Monthly inspections	Site boundaries	<ul style="list-style-type: none"> <li>- Site inspection with photo documentation</li> <li>- Grievances log</li> </ul>	No additional cost

<sup>14</sup> <https://www.ifc.org/wps/wcm/connect/1d19c1ab-3ef8-42d4-bd6b-cb79648af3fe/2%2BOccupational%2BHealth%2Band%2BSafety.pdf?MOD=AJPERES&CVID=nPtgyx>

Receptor/EH S aspect	Monitoring indicators	Responsibility of monitoring	Frequency of monitoring	Location of monitoring	Methods of monitoring	Estimated Cost of monitoring
	- Complaints raised by locals with regards to community health and safety.	Contractor				
Traffic Safety	- Presence of warning signs and speed limits for construction vehicles.	Resident Engineer & PMT, contractor	Daily	The access road leading to the water units	Site inspection with photo documentation	No additional cost
Child labour	- The ToR of contractor includes a contractual term related to prohibiting child labour. - Presence of IDs of workers at the site	Resident Engineer & PMT, contractor	Daily	Construction site	Site inspection and desk work	No additional cost
Cultural heritage	- The chance find procedures are available	Resident Engineer & PMT, contractor	Once	Construction site	Desk work	No additional cost
Temporary labor influx	- Appropriate code of conduct is in place (at the site) - Number of workers	Resident Engineer &	On Monthly basis	Subproject area	- Grievances log - Site inspection	No additional cost



Receptor/EHS aspect	Monitoring indicators	Responsibility of monitoring	Frequency of monitoring	Location of monitoring	Methods of monitoring	Estimated Cost of monitoring
	<ul style="list-style-type: none"> <li>trained on the code of conduct</li> <li>- Breaches to the code of conduct and how they are managed</li> <li>- Complaints raised by the local community due to labor influx</li> <li>- Engagement activities related to code of conduct</li> <li>- Availability of health checkup</li> </ul>	PMT, contractor				
GBV	<ul style="list-style-type: none"> <li>- The code of conduct includes preventive sexual exploitation and prohibition of harassment</li> <li>- Complaints raised by the local community</li> </ul>	Resident Engineer & PMT, contractor	Monthly	Subproject site	<ul style="list-style-type: none"> <li>- The code of conduct</li> <li>- Grievances log</li> </ul>	No additional cost
Infrastructure and underground utilities	<ul style="list-style-type: none"> <li>- Minutes of coordination meeting</li> <li>- Availability of underground utility maps</li> <li>- Incidents of damaging infrastructure</li> <li>- GRM is available at</li> </ul>	Resident Engineer & PMT, contractor	As soon as complaints are received	Subproject site	<ul style="list-style-type: none"> <li>- The code of conduct</li> <li>- Grievances log</li> </ul>	No additional cost

Receptor/EHS aspect	Monitoring indicators	Responsibility of monitoring	Frequency of monitoring	Location of monitoring	Methods of monitoring	Estimated Cost of monitoring
	<p>the site</p> <ul style="list-style-type: none"> <li>- Complaints raised due to infrastructure and water service damages</li> </ul>					
Resident Engineer & PMT, contractor	<ul style="list-style-type: none"> <li>- Caravan location inside the water unit site</li> <li>- Availability of adequate waste management system</li> <li>- Monitoring reports of working conditions</li> <li>- Engagement activities with women minutes of meetings</li> <li>- Training reports, including list of participants of workers received training on the code of conduct</li> <li>- Recommendation and instructions related to the facilities is available at the site</li> </ul>	Resident Engineer & PMT, contractor	As soon as complaints are received	Subproject site	<ul style="list-style-type: none"> <li>- The code of conduct</li> <li>- Grievances log</li> </ul>	No additional cost
Operation Phase						

Receptor/EHS aspect	Monitoring indicators	Responsibility of monitoring	Frequency of monitoring	Location of monitoring	Methods of monitoring	Estimated Cost of monitoring
Air quality <sup>15</sup>	<ul style="list-style-type: none"> <li>- Generated Emissions</li> <li>- Complaints from residents and workers</li> </ul>	Maysan Water Directorate	Twice a year	<ul style="list-style-type: none"> <li>- Near the emissions sources</li> <li>- Site boundaries</li> </ul>	<ul style="list-style-type: none"> <li>- Measurements and reporting of exhaust emissions</li> <li>- Complaints log</li> </ul>	No additional cost
Noise and Vibration <sup>16</sup>	<ul style="list-style-type: none"> <li>- Noise and vibration intensity, exposure durations</li> <li>- Complaints from residents and workers</li> </ul>	Maysan Water Directorate	Twice a year	<ul style="list-style-type: none"> <li>- Near the source of vibration and noise</li> <li>- Site boundaries</li> </ul>	<ul style="list-style-type: none"> <li>- Measurements and reporting of exhaust emissions</li> <li>- Complaints log</li> </ul>	No additional cost
Waste generation	<ul style="list-style-type: none"> <li>- Status of waste management areas on site.</li> <li>- Disposal receipts</li> <li>- Cleanliness of the farm.</li> <li>- Condition of the holding tank</li> <li>- Status of waste resulting from the</li> </ul>	Maysan Water Directorate	Twice a year	<ul style="list-style-type: none"> <li>- Waste areas</li> <li>- Holding tank (s)</li> </ul>	<ul style="list-style-type: none"> <li>- Site inspection</li> <li>- Review waste register</li> </ul>	No additional cost

<sup>15</sup> <https://www.ifc.org/wps/wcm/connect/4e01e089-ad1a-4986-b955-e19e1f305ff0/1-1%2BAir%2BEmissions%2Band%2BAmbient%2BAir%2BQuality.pdf?MOD=AJPERES&CVID=nPtgvbS>

<sup>16</sup> <https://www.ifc.org/wps/wcm/connect/4e01e089-ad1a-4986-b955-e19e1f305ff0/1-1%2BAir%2BEmissions%2Band%2BAmbient%2BAir%2BQuality.pdf?MOD=AJPERES&CVID=nPtgvbS>

Receptor/EHS aspect	Monitoring indicators	Responsibility of monitoring	Frequency of monitoring	Location of monitoring	Methods of monitoring	Estimated Cost of monitoring
	removal of suspended solids and dissolved contaminants					
Water Pollution	<ul style="list-style-type: none"> <li>- Signs of inappropriate waste disposal (including hazardous waste and materials).</li> <li>- Drinking Water quality indicators</li> <li>- Observation of spillage/leakages of Chlorine</li> </ul>	Resident Engineer & PMT, contractor	Monthly	<ul style="list-style-type: none"> <li>- Euphrates water intake</li> <li>- Chlorine storage area</li> </ul>	<ul style="list-style-type: none"> <li>- Visual inspection</li> <li>- Documentation in H&amp;S monthly reports</li> </ul>	No additional cost
Impacts on soil	<p>Observation of:</p> <ul style="list-style-type: none"> <li>- spillage/leakages from hazardous material and wastewater</li> <li>- accumulated wastes</li> <li>- piling of hazardous materials</li> </ul>	Maysan Water Directorate	Twice a year	Subproject site	<ul style="list-style-type: none"> <li>- Site inspection</li> <li>- H&amp;S reports</li> </ul>	No additional cost
Occupational Health and Safety <sup>17</sup>	<ul style="list-style-type: none"> <li>- Adherence to PPE, especially by workers who clean the water.</li> <li>- Site safety</li> <li>- Storage of materials</li> </ul>	Maysan Water Directorate	Twice a year	Water units site	<ul style="list-style-type: none"> <li>- Maintaining a record of toxic exposure/ contact</li> <li>- Checking workers' complaints</li> </ul>	No additional cost
Community	<ul style="list-style-type: none"> <li>- Emergency response</li> </ul>	Maysa	Twice a year	Water units	<ul style="list-style-type: none"> <li>- Site inspection</li> </ul>	No additional

<sup>17</sup> <https://www.ifc.org/wps/wcm/connect/1d19c1ab-3ef8-42d4-bd6b-cb79648af3fe/2%2BOccupational%2BHealth%2Band%2BSafety.pdf?MOD=AJPERES&CVID=nPtgxyx>

Receptor/EH S aspect	Monitoring indicators	Responsibility of monitoring	Frequency of monitoring	Location of monitoring	Methods of monitoring	Estimated Cost of monitoring
health and safety	plan is in place - Complaints raised due to community health aspects - Applying monitoring indicators required by WHO	n Water Directorate		site	- Maintaining a record of toxic exposure/ contact - Checking residents' complaints	cost

# ANNEXES

## Annex 1: Consultations Photos



Public Consultations at **Sikanyan Village**



Public Consultations at **Al-Makam Village**




Public Consultations at **Haod 6 Village**



Public Consultations at **Sonor Village**

## Annex (2): Sample individual interviews for both men and women in the village


 عزيزتي المواطنة... عزيزي المواطن...  
 (تجري) وزارة التخطيط / الصندوق الاجتماعي للتنمية ( مسيح ميداني لغرض التشاور المجتمعي مع أبناء القرية حول الإجراءات البيئية والاجتماعية التي سيتم اتخاذها بخصوص تنفيذ المشاريع في القرية ومدى اثرها على المجتمع المحلي والبيئة المحيطة، راجين الإجابة بصق وحيادية عن الاستبيان التالي دون الحاجة لذكر الاسم أو وسيلة الاتصال .

اسم المشروع : مشروع بناء عيادة صحية

القضاء ..... الناحية الريفيين القرية العم  
 الجنس: ذكر  أنثى   
 العمر: سنة ..... سنة  
 المهنة:  موظف  متقاعد  كاسب  طالب  ربة بيت

---

١. هل هناك ادعاءات او مطالبات من قبل السكان المحليين بعائدية الارض المقام عليها المشروع؟  
 نعم  كلا  ملاحظت.

٢. هل سيكون هناك ضرر على النشاطات و المصالح اليومية للأهالي بسبب الاعمال الانشائية للمشروع؟  
 نعم  كلا  ملاحظت

٣. هل هناك اي بنى تحتية ستتأثر بسبب الاعمال الانشائية للمشروع ؟  
 نعم  كلا  ملاحظت

٤. هل هناك اعادة توطين لشخص او لعدة اشخاص بسبب اقامة المشروع في القرية؟  
 نعم  كلا  ملاحظت

٥. هل سوف يتأثر المجتمع المحلي بصورة سلبية نتيجة المشاريع المقامة؟  
 نعم  كلا  ملاحظت

٦. هل اعمال انشاء او اعادة تأهيل المشروع ستؤثر بشكل سلبي على المجتمعات الأكثر ضعفاً والأكثر هشاشة (النساء والمعاقين) ؟  
 نعم  كلا  ملاحظت

٧. هل تتوقع ازالة محاصيل زراعية او اشجار او اية غطاء نباتي تعود عائدته لمواطنين او سكان محليين بسبب الاعمال الانشائية للمشروع؟  
 نعم  كلا  ملاحظت

٨. هل سيؤثر المشروع في الكثافة السكانية (مكانية قديم مواطنين من مناطق اخرى الى القرية بسبب المشاريع التي ستنفذ)؟  
 نعم  كلا  ملاحظت

٩. هل تعتقد ان عملية انشاء او اعادة تأهيل المشروع لها اثار ايجابية من الناحية الاجتماعية بالنسبة للسكان القاطنين في المناطق القريبة من المشروع؟  
 نعم  كلا  ملاحظت

شكراً على وقتكم ....


 عزيزتي المواطنة... عزيزي المواطن...  
 (تجري) وزارة التخطيط / الصندوق الاجتماعي للتنمية ( مسيح ميداني لغرض التشاور المجتمعي مع أبناء القرية حول الإجراءات البيئية والاجتماعية التي سيتم اتخاذها بخصوص تنفيذ المشاريع في القرية ومدى اثرها على المجتمع المحلي والبيئة المحيطة، راجين الإجابة بصق وحيادية عن الاستبيان التالي دون الحاجة لذكر الاسم أو وسيلة الاتصال .

اسم المشروع : مشروع بناء عيادة صحية

القضاء ..... الناحية الريفيين القرية سكانيين  
 الجنس: ذكر  أنثى   
 العمر: سنة ..... سنة  
 المهنة:  موظف  متقاعد  كاسب  طالب  ربة بيت

---

١. هل هناك ادعاءات او مطالبات من قبل السكان المحليين بعائدية الارض المقام عليها المشروع؟  
 نعم  كلا  ملاحظت.

٢. هل سيكون هناك ضرر على النشاطات و المصالح اليومية للأهالي بسبب الاعمال الانشائية للمشروع؟  
 نعم  كلا  ملاحظت

٣. هل هناك اي بنى تحتية ستتأثر بسبب الاعمال الانشائية للمشروع ؟  
 نعم  كلا  ملاحظت

٤. هل هناك اعادة توطين لشخص او لعدة اشخاص بسبب اقامة المشروع في القرية؟  
 نعم  كلا  ملاحظت

٥. هل سوف يتأثر المجتمع المحلي بصورة سلبية نتيجة المشاريع المقامة؟  
 نعم  كلا  ملاحظت

٦. هل اعمال انشاء او اعادة تأهيل المشروع ستؤثر بشكل سلبي على المجتمعات الأكثر ضعفاً والأكثر هشاشة (النساء والمعاقين) ؟  
 نعم  كلا  ملاحظت

٧. هل تتوقع ازالة محاصيل زراعية او اشجار او اية غطاء نباتي تعود عائدته لمواطنين او سكان محليين بسبب الاعمال الانشائية للمشروع؟  
 نعم  كلا  ملاحظت

٨. هل سيؤثر المشروع في الكثافة السكانية (مكانية قديم مواطنين من مناطق اخرى الى القرية بسبب المشاريع التي ستنفذ)؟  
 نعم  كلا  ملاحظت

٩. هل تعتقد ان عملية انشاء او اعادة تأهيل المشروع لها اثار ايجابية من الناحية الاجتماعية بالنسبة للسكان القاطنين في المناطق القريبة من المشروع؟  
 نعم  كلا  ملاحظت

شكراً على وقتكم ....





## استبيان الصندوق الاجتماعي للتنمية لمحافظة كركوك

عزيزتي المواطنة... عزيزي المواطن...  
تجري (وزارة التخطيط / الصندوق الاجتماعي للتنمية) مسح ميداني لغرض التشاور المجتمعي مع أبناء القرية حول الإجراءات البيئية والاجتماعية التي سيتم اتخاذها بخصوص تنفيذ المشاريع في القرية ومدى اثرها على المجتمع المحلي والبيئة المحيطة، راجين الإجابة بصدق وحيادية عن الاستبيان التالي دون الحاجة لذكر الاسم أو وسيلة الاتصال .

اسم المشروع : مدى صحة اثار مياه صرف الصحي في القرية 7

القضاء كركوك الناحية المهلب القرية 7  
الجنس:  ذكر  أنثى  
العمر: 35 سنة  
المهنة:  موظف  مقاعد  كاسب  طالب  ربة بيت

- هل هناك ادعاءات او مطالبات من قبل السكان المحليين بعبادية الارض المقام عليها المشروع؟  
 نعم  كلا  ملاحظات
- هل سيكون هناك ضرر على النشاطات و المصالح اليومية للأهالي بسبب الاعمال الانشائية للمشروع؟  
 نعم  كلا  ملاحظات
- هل هناك اي بنى تحتية ستتأثر بسبب الاعمال الانشائية للمشروع؟  
 نعم  كلا  ملاحظات
- هل هناك اعادة توطين لشخص او لعدة اشخاص بسبب اقامة المشروع في القرية؟  
 نعم  كلا  ملاحظات
- هل سوف يتأثر المجتمع المحلي بصورة سلبية نتيجة المشاريع المقامة؟  
 نعم  كلا  ملاحظات
- هل اعمال انشاء او اعادة تأهيل المشروع ستؤثر بشكل سلبي على المجاميع الأكثر ضعفاً والأكثر هشاشة (النساء والمعاقين)؟  
 نعم  كلا  ملاحظات
- هل تتوقع ازالة محاصيل زراعية او اشجار او اية غطاء نباتي تعود عائدته لمواطنين او سكان محليين بسبب الاعمال الانشائية للمشروع؟  
 نعم  كلا  ملاحظات
- هل سيؤثر المشروع في الكثافة السكانية (امكانية قدوم مواطنين من مناطق اخرى الى القرية بسبب المشاريع التي ستنفذ)؟  
 نعم  كلا  ملاحظات
- هل تعتقد ان عملية انشاء او اعادة تأهيل المشروع لها اثر ايجابية من الناحية الاجتماعية بالنسبة للسكان القاطنين في المناطق القريبة من المشروع؟  
 نعم  كلا  ملاحظات

شكراً على وقتكم ....



## استبيان الصندوق الاجتماعي للتنمية لمحافظة كركوك

عزيزتي المواطنة... عزيزي المواطن...  
تجري (وزارة التخطيط / الصندوق الاجتماعي للتنمية) مسح ميداني لغرض التشاور المجتمعي مع أبناء القرية حول الإجراءات البيئية والاجتماعية التي سيتم اتخاذها بخصوص تنفيذ المشاريع في القرية ومدى اثرها على المجتمع المحلي والبيئة المحيطة، راجين الإجابة بصدق وحيادية عن الاستبيان التالي دون الحاجة لذكر الاسم أو وسيلة الاتصال .

اسم المشروع : مدى صحة اثار مياه صرف الصحي في القرية 7

القضاء كركوك الناحية المهلب القرية 7  
الجنس:  ذكر  أنثى  
العمر: 35 سنة  
المهنة:  موظف  مقاعد  كاسب  طالب  ربة بيت

- هل هناك ادعاءات او مطالبات من قبل السكان المحليين بعبادية الارض المقام عليها المشروع؟  
 نعم  كلا  ملاحظات
- هل سيكون هناك ضرر على النشاطات و المصالح اليومية للأهالي بسبب الاعمال الانشائية للمشروع؟  
 نعم  كلا  ملاحظات
- هل هناك اي بنى تحتية ستتأثر بسبب الاعمال الانشائية للمشروع؟  
 نعم  كلا  ملاحظات
- هل هناك اعادة توطين لشخص او لعدة اشخاص بسبب اقامة المشروع في القرية؟  
 نعم  كلا  ملاحظات
- هل سوف يتأثر المجتمع المحلي بصورة سلبية نتيجة المشاريع المقامة؟  
 نعم  كلا  ملاحظات
- هل اعمال انشاء او اعادة تأهيل المشروع ستؤثر بشكل سلبي على المجاميع الأكثر ضعفاً والأكثر هشاشة (النساء والمعاقين)؟  
 نعم  كلا  ملاحظات
- هل تتوقع ازالة محاصيل زراعية او اشجار او اية غطاء نباتي تعود عائدته لمواطنين او سكان محليين بسبب الاعمال الانشائية للمشروع؟  
 نعم  كلا  ملاحظات
- هل سيؤثر المشروع في الكثافة السكانية (امكانية قدوم مواطنين من مناطق اخرى الى القرية بسبب المشاريع التي ستنفذ)؟  
 نعم  كلا  ملاحظات
- هل تعتقد ان عملية انشاء او اعادة تأهيل المشروع لها اثر ايجابية من الناحية الاجتماعية بالنسبة للسكان القاطنين في المناطق القريبة من المشروع؟  
 نعم  كلا  ملاحظات

شكراً على وقتكم ....





## استبيان الصندوق الاجتماعي للتنمية لمحافظة كوكب

عزيزتي المواطنة... عزيزي المواطن...  
 ثجري ( وزارة التخطيط / الصندوق الاجتماعي للتنمية ) مسج ميداني لغرض التشاور المجتمعي مع أبناء القرية حول الإجراءات البيئية والاجتماعية التي سيتم اتخاذها بخصوص تنفيذ المشاريع في القرية ومدى اثرها على المجتمع المحلي والبيئة المحيطة، راجين الإجابة بصدق وحيادية عن الاستبيان التالي دون الحاجة لذكر الاسم أو وسيلة الاتصال .

اسم المشروع : مشروع مياه الري

القضاء دائرة الناحية ..... القرية حضر  
 الجنس: ذكر  أنثى   
 العمر: ... سنة  
 المهنة:  موظف  متقاعد  كاسب  طالب  ربة بيت

- هل هناك ادعاءات او مطالبات من قبل السكان المحليين بعائدية الارض المقام عليها المشروع؟  
 نعم  كلا  ملاحظت.
- هل سيكون هناك ضرر على النشاطات والمصالح اليومية للأهالي بسبب الاعمال الانشائية للمشروع؟  
 نعم  كلا  ملاحظت
- هل هناك اي بنى تحتية ستتأثر بسبب الاعمال الانشائية للمشروع؟  
 نعم  كلا  ملاحظت
- هل هناك اعادة توطين لشخص او لعدة اشخاص بسبب اقامة المشروع في القرية؟  
 نعم  كلا  ملاحظت
- هل سوف يتأثر المجتمع المحلي بصورة سلبية نتيجة المشاريع المقامة؟  
 نعم  كلا  ملاحظت
- هل اعمال انشاء او اعادة تاهيل المشروع ستؤثر بشكل سلبي على المجاميع الاكثر ضعفا والاكثر هشاشة (النساء والمعاقين)؟  
 نعم  كلا  ملاحظت
- هل تتوقع ازالة محاصيل زراعية او اشجار او اية غطاء نباتي تعود عائدته لمواطنين او سكان محليين بسبب الاعمال الانشائية للمشروع؟  
 نعم  كلا  ملاحظت
- هل سيؤثر المشروع في الكثافة السكانية (امكانية قديم مواطنين من مناطق اخرى الى القرية بسبب المشاريع التي ستنفذ)؟  
 نعم  كلا  ملاحظت
- هل تعتقد ان عملية انشاء او اعادة تاهيل المشروع لها اثار ايجابية من الناحية الاجتماعية بالنسبة للسكان القاطنين في المناطق القريبة من المشروع؟  
 نعم  كلا  ملاحظت

شكراً على وقتكم ....



## استبيان الصندوق الاجتماعي للتنمية لمحافظة كوكب

عزيزتي المواطنة... عزيزي المواطن...  
 ثجري ( وزارة التخطيط / الصندوق الاجتماعي للتنمية ) مسج ميداني لغرض التشاور المجتمعي مع أبناء القرية حول الإجراءات البيئية والاجتماعية التي سيتم اتخاذها بخصوص تنفيذ المشاريع في القرية ومدى اثرها على المجتمع المحلي والبيئة المحيطة، راجين الإجابة بصدق وحيادية عن الاستبيان التالي دون الحاجة لذكر الاسم أو وسيلة الاتصال .

اسم المشروع : مشروع مياه الري

القضاء دائرة الناحية ..... القرية حضر  
 الجنس: ذكر  أنثى   
 العمر: ... سنة  
 المهنة:  موظف  متقاعد  كاسب  طالب  ربة بيت

- هل هناك ادعاءات او مطالبات من قبل السكان المحليين بعائدية الارض المقام عليها المشروع؟  
 نعم  كلا  ملاحظت.
- هل سيكون هناك ضرر على النشاطات والمصالح اليومية للأهالي بسبب الاعمال الانشائية للمشروع؟  
 نعم  كلا  ملاحظت
- هل هناك اي بنى تحتية ستتأثر بسبب الاعمال الانشائية للمشروع؟  
 نعم  كلا  ملاحظت
- هل هناك اعادة توطين لشخص او لعدة اشخاص بسبب اقامة المشروع في القرية؟  
 نعم  كلا  ملاحظت
- هل سوف يتأثر المجتمع المحلي بصورة سلبية نتيجة المشاريع المقامة؟  
 نعم  كلا  ملاحظت
- هل اعمال انشاء او اعادة تاهيل المشروع ستؤثر بشكل سلبي على المجاميع الاكثر ضعفا والاكثر هشاشة (النساء والمعاقين)؟  
 نعم  كلا  ملاحظت
- هل تتوقع ازالة محاصيل زراعية او اشجار او اية غطاء نباتي تعود عائدته لمواطنين او سكان محليين بسبب الاعمال الانشائية للمشروع؟  
 نعم  كلا  ملاحظت
- هل سيؤثر المشروع في الكثافة السكانية (امكانية قديم مواطنين من مناطق اخرى الى القرية بسبب المشاريع التي ستنفذ)؟  
 نعم  كلا  ملاحظت
- هل تعتقد ان عملية انشاء او اعادة تاهيل المشروع لها اثار ايجابية من الناحية الاجتماعية بالنسبة للسكان القاطنين في المناطق القريبة من المشروع؟  
 نعم  كلا  ملاحظت

شكراً على وقتكم ....

## ANNEX (3): IRAQI STANDARDS FOR AIR, NOISE, and Water

### Ambient Air Quality Guidelines

Pollutant	Iraqi Standards		WHO Standards
	Concentration	Average Time	Concentration
CO	10 ppm	8 hours	N/A
	35 ppm	1 hour	N/A
SO <sub>2</sub>	0.1 ppm	1 hour	500 µg/m <sup>3</sup>
	0.04 ppm	24 hours	20 µg/m <sup>3</sup>
	0.018 ppm	1 year	N/A
NO <sub>2</sub>	0.05 ppm	24 hours	200 µg/m <sup>3</sup>
	0.04 ppm	1 year	40 µg/m <sup>3</sup>
Ozone (O <sub>3</sub> )	0.06 ppm	1 hour	100 µg/m <sup>3</sup>
PM <sub>10</sub>	150 µg/m <sup>3</sup>	24 hours	50 µg/m <sup>3</sup>
PM <sub>2.5</sub>	65 µg/m <sup>3</sup>	24 hours	50 µg/m <sup>3</sup>
	15 µg/m <sup>3</sup>	1 year	15 µg/m <sup>3</sup>
Total Suspended Particles	350 µg/m <sup>3</sup>	24 hours	N/A
	150 µg/m <sup>3</sup>	1 year	N/A
Falling Dust	10 t/Km <sup>2</sup> /month (Residential Zone)	30 days	N/A
	20 t/Km <sup>2</sup> /month (Industrial Zone)	30 days	N/A
Hydrocarbons	0.24 ppm	3 hours	N/A
Pb	2 µg/m <sup>3</sup>	24 hours	N/A
	1.5 µg/m <sup>3</sup>	3 months	N/A
	1 µg/m <sup>3</sup>	1 year	N/A
Benzene	0.003 µg/m <sup>3</sup>	1 year	N/A
Dioxin	0.6 pico g/m <sup>3</sup>	1 year	N/A

### Noise:

#### **Law no. 41 of the year 2015: Noise Protection and Control / Noise Limits for Different Working Zones**

Type	Allowable (dB)
Industrial	70
Commercial	70
Residential	55

**Water:**

The table below shows the limits defined for discharges to both natural waters (water resources) and sewers (which generally have higher permissible discharge limits).

Pollutant	Limits for discharge to water resources	Limits for discharge to public sewers
Color	-	-
Temperature	Less than 35°C	45°C
Suspended solids	60	750
pH	6 – 9.5	6 – 9.5
Dissolved Oxygen (DO)	-	-
Biochemical Oxygen Demand (BOD)	Less than 40	1,000
Chemical Oxygen Demand (COD)	Less than 100	-
Cyanide (CN <sup>-</sup> )	0.05	0.5
Fluoride (F <sup>-</sup> )	5.0	10
Free Chlorine (Cl <sub>2</sub> )	Traces	100
Chloride (Cl <sup>-</sup> )	<p>A. If the ratio of the amount of water discharged to the amount of source water is 1000:1 or less, the chloride concentration of the discharge is permitted at 1% of the concentration of the natural source before discharge.</p> <p>B. If the ratio of the amount of water discharged to the amount of source water is more than 1000:1 the wastewater discharge must not exceed a chloride concentration of greater than 600 mg/L.</p> <p>C. If the concentration of chloride in the source water is less than 200 mg/L then the permitted discharge limit must be established on a case by case basis</p>	600
Phenol	0.01 – 0.05	5 – 10
Sulfate (SO <sub>4</sub> <sup>2-</sup> )	<p>A. If the ratio of the amount of water discharged to the amount of source water is 1000:1 or less, the sulfate concentration of the discharge is permitted at 1% of the concentration of the natural source before discharge.</p> <p>B. If the ratio of the amount of water discharged to the amount of source water is more than 1000:1 the wastewater discharge must not exceed a sulfate concentration of greater than 400 mg/L.</p> <p>C. If the concentration of sulfate in the source water is less than 200 mg/L then the permitted discharge limit must be established on a case by case basis</p>	300
Nitrate (NO <sub>3</sub> <sup>-</sup> )	50	-
Phosphate (PO <sub>4</sub> <sup>3-</sup> )	3	-
Ammonium (NH <sub>4</sub> <sup>+</sup> )	-	-

Pollutant	Limits for discharge to water resources	Limits for discharge to public sewers
DDT	Nil	-
Lead (Pb)	0.1	0.1
Arsenic (As)	0.05	0.05
Copper (Cu)	0.2	-
Nickel (Ni)	0.2	0.1
Selenium (Se)	0.05	-
Mercury (Hg)	0.005	0.001
Cadmium	0.01	0.1
Zinc (Zn)	2.0	0.1
Chromium (Cr)	0.1	0.1
Aluminum (Al)	5.0	20
Barium (Ba)	4.0	0.1
Boron (B)	1.0	1.0
Cobalt (Co)	0.5	0.5
Iron (Fe)	2.0	15
Manganese (Mn)	0.5	-
Silver (Ag)	0.05	0.1
Total Hydrocarbons & Derivatives	Allows discharge of total hydrocarbons to water sources and A1 and A2 according to the concentrations and limitations set forth in the tables below; the concentration of hydrocarbons must be measured discharging to the water source. Hydrocarbons shall not be discharged to water sources A3 and A4. For rivers in continuous flow 10 mg/l according to the ratio of the amount of wastewater discharged to the amount of the water source should not be less than 1000:1. For a river in a continuous flow 3 mg/L and in accordance with the ratio of the amount of the wastewater discharged to the amount of water source should not be 300:1 or less.	-
Sulfide (S <sup>2-</sup> )	Nil	3.0
Ammonia (NH <sub>3</sub> )	Nil	10
Ammonia gas (free NH <sub>3</sub> )	Nil	6.0
Sulfur dioxide SO <sub>2</sub>	Nil	7.0
Calcium Carbide CaC	Nil	Not allowed
Organic solvents	Nil	Not allowed
Benzene	Nil	0.5
Chlorobenzene	Nil	0.1
TNT	Nil	0.5
Bromine (Br <sub>2</sub> )	Nil	1 – 3

## مسئوليات المقاول (Arabic) Contractor's Responsibilities (Annex (4))

يجب على مقاول الإنشاء الالتزام بالإجراءات التالية:

### جودة الهواء

- الترطيب المنتظم للطرق بالماء لمنع الغبار
- التحكم في نواتج الحفر والتسوية للحد من إنتشار الغبار .
- أي مواد بناء قابلة للتطاير (أسمنت جاف وخلافه) يتم تخزينها في أكياس محكمة الغلق وتغطيتها لمنع تولد الغبار .
- الاحتفاظ بالمزوت والزيوت والطلاء والمواد الكيميائية الأخرى المستخدمة في الموقع بأقل كميات ممكنة وتخزينها في حاويات محكمة الغلق للحد من الأبخرة ؛
- لا يتم تشغيل محركات المركبات والآلات الأخرى إلا عند الضرورة لتجنب الانبعاثات غير الضرورية ؛
- يتم الحفاظ على جميع المعدات والآلات والمركبات المستخدمة في الموقع في حالة عمل جيدة في جميع الأوقات لضمان الحد الأدنى من استهلاك الوقود وعوادم الدخان. ينطبق هذا على الحافلات المستخدمة لنقل العمال من وإلى الموقع.
- منع الحرق المكشوف للمخلفات.
- يتم تغطية الشاحنة الناقلة لمواد/مخلفات البناء أو المواد المتربة الأخرى وذلك بعد التأكد من الاحتفاظ بمسافة ٠.٣ متر تحت الحافة العلوية لجدران الشاحنة ، بالقماش المشمع للتحكم في الغبار ؛
- تغطية درم الحفر المخزن بصفة مؤقتة في الموقع بالمواد المناسبة ، مثل البولي إيثيلين أو ألواح النسيج لتجنب تشتت التربة.
- تحديد سرعة قصوى للمركبات والمعدات التابعة للمشروع بحيث ألا تتجاوز السرعة القصوى داخل حدود الموقع عن ١٠-١٥ كم/ساعة.
- توفير خط ساخن لتلقي الشكاوي ٧/٢٤

### الضوضاء

- تطبيق جدول زمني مناسب لتجنب أي أعمال قد تسبب ضوضاء واهتزازات خلال الفترة من ١٠ مساء إلى ٦ صباحا.
- إقتصار تشغيل المعدات المستخدمة في أعمال البناء على أوقات محدودة خلال النهار حيث أنها ليست آمنة للعمل أثناء الليل. سيؤدي ذلك إلى تقليل اضطراب الضوضاء إلى حد كبير للمجتمعات القريبة من مواقع العمل ؛
- تقييد استخدام الآلات التي تصدر ضوضاء بالقرب من المستقبلات الحساسة ، واستخدام وسائل الحد من الضوضاء لآلات البناء ، إذا لزم الأمر ؛
- استخدام المركبات والمعدات المطابقة للمعايير الوطنية للضوضاء والاهتزاز ؛
- أثناء العمل ، يجب إغلاق أغطية المحرك للمولدات وضواغط الهواء وغيرها من المعدات الميكانيكية التي تعمل بالطاقة ، ووضع المعدات بعيداً عن المناطق السكنية قدر الإمكان ؛
- يجب توفير أغطية للأذنين / معدات حماية السمع لجميع العمال

-لا يتم تشغيل محركات المركبات والآلات الأخرى إلا عند الضرورة للتحكم في الضوضاء الناتجة ؛  
-تطبيق نظام الشكاوى لتلقي الشكاوى المتعلقة بالضوضاء .

### إدارة المخلفات الصلبة والخطرة

#### التقليل من المخلفات:

- شراء المواد بالكمية الدقيقة المطلوبة ، لتقليل الاستخدامات المتبقية غير المستخدمة.
  - تقليل تولد النفايات في الموقع.
  - وضع خطة إدارة بسيطة للنفايات.
  - يجب جمع النفايات العامة ونقلها إلى المكان المخصص لذلك من قبل البلدية.
  - يجب جمع نفايات الطعام ، حيثما أمكن ، مع مراعاة النظافة الشخصية ، للتخلص منها خارج الموقع من خلال مقاولين مرخصين.
  - يجب وضع حاويات لتجميع النفايات في كل موقع عمل.
  - يجب جمع النفايات الكيميائية في براميل (أو حاويات محكمة مائلة) ، معنونة بشكل مناسب ، وم ثم يتم إرجاعها إلى المورد أو نقلها بأمان إلى المكان المخصص من قبل البلدية. يحتوي مكب النفايات هذا على مكان مخصص لاستقبال النفايات الخطرة والطبية على حد سواء ، ويجب إجراء عمليات التخزين والنقل والتعامل مع جميع المواد الكيميائية وفقاً لجميع المتطلبات التشريعية ، من خلال المقاولين المرخصين وبالتنسيق مع البلدية.
  - يجب تخزين جميع النفايات الخطرة بشكل ملائم في مناطق محدودة ويجب تحديدها بوضوح على أنها "خطرة".
  - يجب أن يتم نقل النفايات الخطرة والتخلص منها من خلال مقاولين مرخصين وبالتنسيق الوثيق مع البلدية ذات الصلة ووفقاً للمتطلبات والتعليمات القانونية.
  - يجب إدارة السوائل الخطرة ، مثل المذيبات وعوامل مقاومة الصدأ طبقاً لمتطلبات التشريعات ذات الصلة.
  - يجب إعداد جرد للمواد الخطرة لفترة البناء .
  - يجب توفير صحيفة بيانات سلامة المواد (MSDS) للمواد الخطرة في الموقع أثناء البناء وإتاحتها وشرحها للعمال.
  - يجب جمع نفايات المواد الهيدروكربونية ، بما في ذلك زيوت التشحيم ، للنقل الآمن خارج الموقع لإعادة استخدامها أو إعادة تدويرها أو نقلها أو التخلص منها في مكب معين من قبل البلدية.
- إعادة استخدام النفايات وإعادة التدوير

-كلما أمكن ، سيعيد المقاول استخدام المواد القابلة للتدوير وإعادة تدويرها .  
-يتم إعادة تدوير المخلفات التالية: الورق المقوى ، والمعادن ، وخردة المعادن مثل علب المشروبات الغازية ، وزيت مستهلك ، والورق ، والبلاستيك ، والخرسانة النظيفة ، وكذلك الغطاء النباتي المنزوع .

#### حفظ السجلات

-سيتم الاحتفاظ بكافة سجلات إزالة النفايات والإبلاغ عنها كما هو مطلوب في تقرير الأداء البيئي الشهري ؛

-السجلات التي سيتم الاحتفاظ بها تشمل: إيصالات وفواتير من مقاول نقل النفايات ومنشأة استلام النفايات  
-يتم الاحتفاظ بالسجلات السالفة الذكر في سجل النفايات ، الذي يسجل تواريخ الجمع ونوع النفايات والكميات وشركة نقل  
النفايات والوجهة وتوقيع الشخص المفوض

#### تخزين النفايات ومعالجتها

-سيتم تخزين النفايات في حاويات أو صناديق. لن يتم تخزينها مباشرة على أرض غير مبطنة ؛  
-سيتم تخزين نفايات إعادة التدوير في مناطق أو حاويات منفصلة ، ولن يتم خلطها مع أنواع النفايات الأخرى ؛  
-يجب تخزين جميع النفايات الخطرة بشكل ملائم في المناطق المحصورة وتحديدًا بوضوح على أنها "خطرة"  
-معالجة النفايات وإدارتها بشكل صحيح من خلال فصل النفايات الصلبة عن النفايات الخطرة وعدم مزجها في مكب النفايات ؛  
-سيتم جدولة إزالة النفايات من الموقع ، بحيث يكون لديك دائمًا سلة للنفايات متاحة للإستخدام في الموقع ، وللتأكد من عدم  
الملئ الكامل للنفايات/الحاويات ؛  
-أي مناطق تخزين نفايات مؤقتة (غير متضمنة في صناديق أو حاويات) سيتم تغطيتها و / أو إحاطتها بسياج شبكي لمنع  
هبوب الرياح منها إلي الموقع ؛ و  
-يتم تخزين النفايات السائلة ، بما في ذلك نفايات الزيوت والمواد الكيميائية السائلة ، في براميل / حاويات محكمة الإغلاق  
على سطح خرساني.

#### التخلص من النفايات

- يجب أن يتم نقل النفايات الخطرة والتخلص منها من خلال المقاولين المرخص لهم وبالتنسيق الوثيق مع البلدية المختصة  
بذلك.

-يجب جمع النفايات العامة ونقلها إلى المكب المعين من قبل البلدية.

#### جودة التربة

-وضع علامات لتحديد مكان الحفر عن طريق سور ولاصقات وعلامات ارشادية.  
-إتباع الأساليب السليمة للحد من الانسكابات/التسربات؛  
-التداول والإدارة السليمة للمخلفات ومواد البناء والمواد الخطرة.  
-يتم تخزين النفايات داخل صناديق أو حاويات، وليس على الأرض مباشرة؛  
-عدم دفن و / أو حرق النفايات المنزلية في موقع المشروع.  
-التخزين المؤقت للنفايات الصلبة عن طريق الاحتواء المناسب لتجنب انتشار النفايات والرائحة وتجنب الغبار؛ احتواء ثانوي  
لمنع التسرب.  
-ضمان أن تكون حاويات المواد السائلة الخطرة / حاويات النفايات محكمة الإغلاق بشكل صحيح دائمًا ومؤمنة من الانقلاب  
/ السقوط / التلف / أشعة الشمس المباشرة أثناء النقل والتخزين؛  
-تخزين المواد الكيميائية، مثل الزيوت ومضادات التآكل بكميات قليلة بالموقع.  
-تحفظ جميع أنواع الوقود والمواد الكيميائية السائلة في أوعية أو براميل أو خزانات محكمة الإغلاق وفوق سطح الارض.

- يجب إجراء الصيانة والإصلاح الروتيني للمعدات / المركبات المتحركة في ورشة عمل.
- يتم الاحتفاظ بمجموعات التنظيف الخاصة بالانسكابات بالقرب من المناطق المستخدمة لتخزين الوقود أو المواد الكيميائية السائلة وسيتلقى الموظفون تدريباً على استخدام أدوات تنظيف الانسكابات؛
- تخزين الزيت ومواد الطلاء في مكان مناسب له قاعدة واقية، مثل بلاطة خرسانية، لمنع أي تغلغل في الأرض؛
- التأكد من وجود البراميل والحاويات المستخدمة في تخزين الوقود أو المواد الكيميائية السائلة (بما في ذلك الزيوت المستعملة والدهانات) في حالة جيدة وخالية من الصدأ أو التلف؛
- تنظيف موقع البناء من المخلفات الصلبة قبل إغلاقه.
- تخصيص مناطق معينة لتخزين مخلفات التربة ومخلفات البناء.
- يجب أن يتم ترميم التربة السطحية والمناطق المتضررة بعد انتهاء مرحلة البناء.

### جودة المياه

- يجب تنفيذ أعمال الأرض (إزالة الغطاء النباتي، والحفر، والتسوية) خلال فترات الطقس الجاف.
- يجب أن يتم تخزين التربة على مسافة آمنة بعيداً عن المجاري المائية.
- يتم تخزين النفايات داخل صناديق أو حاويات ، وليس على الأرض مباشرة لمنع التسرب ؛
- عدم إلقاء / التخلص من النفايات الصلبة (غير الخطرة أو الخطرة) ومياه الصرف في المسطحات المائية أو بالقرب منها.
- التنظيف الجيد لتقليل الانسكابات / التسريبات.
- الاستجابة السريعة للانسكابات العرضية للوقود ومواد التشحيم والمواد السامة أو الضارة الأخرى ، واستعادتها والتخلص منها بشكل مناسب (يجب على المقاول إعداد خطة استجابة للطوارئ).
- عدم غسل أو صيانة المركبات والآلات بالقرب من المسطحات المائية.

### المياه الجوفية:

- سيتم تخزين النفايات داخل حاويات أو حاويات نفايات ، وليس مباشرة على الأرض لمنع التسرب ؛
- يجب إجراء الصيانة والإصلاح الروتينية للمعدات / المركبات المتحركة في ورشة ؛
- إجراء الصيانة والتنقيش الدوريين على خزانات الصرف الصحي والسباكة ومرافق الصرف الصحي المرتبطة بها لضمان ظروف صحية جيدة

### السلامة والصحة المهنية

- يجب على المقاول إعداد خطة الصحة والسلامة المهنية وتحليل مخاطر العمل خلال مرحلة البناء. سيقوم المقاول أيضاً بتعيين شخص متخصص للإشراف على الخطة. فيما يلي بعض تدابير التخفيف الرئيسية التي يجب تضمينها في الخطة:
- يجب تدريب العمال على تحديد وتقييم مخاطر السقوط وأن يكونوا على دراية كاملة بكيفية التحكم في التعرض لمثل هذه المخاطر.
- يجب على العمال وموظفي الموقع دائماً استخدام معدات الحماية الشخصية خاصة عند التعامل مع المواد السامة.
- يجب على العمال الامتنال لقاعدة إدارة الصحة والسلامة المهنية التي تخص الاستخدام الآمن للسلام.



- لمنع مخاطر معدات البناء الثقيلة ، يجب على العمال اتباع إرشادات سلامة البناء المصممة للقضاء على التعرض لمثل هذه الإصابات والحوادث
- يجب أن تكون معدات الطوارئ (مواد تنظيف الانسكاب ، طفايات الحريق ، إلخ ..) متوفرة دائمًا في الموقع.
- يجب توفير الفحوصات الصحية الأولية والدورية للعمال.
- يجب أن تتضمن الخطة تدابير الاستجابة لفيروس كورونا المستجد كما هو موضح في الملحق ٤.
- يجب تزويد العمال بتأمين صحي (يغطي تقديم الدعم الطبي في حالة الإصابة بالأمراض) وتأمين السلامة (الذي يغطي العمال في حالة الحوادث)

### السلامة المجتمعية

- يجب وضع خطط أمن وأمان كافية لمنع وصول الجمهور إلى مواقع العمل والمواد الخطرة والمخلفات
- يجب على المقاول الالتزام بخطة إدارة المخلفات لتجنب أي عوائق أو مخاطر على السلامة.
- يجب توفير آلية للتظلمات لضمان التواصل الفعال فيما يتعلق بمخاوف المجتمع.

### السلامة المرورية

- يجب تثبيت لافتات أمان لإخطار المجتمع بأن مركبات البناء ستستخدم الطرق المؤدية إلى محطة المياه
- يجب على المقاول التأكد من أن النقل المرتبط بالبناء يتوافق مع حدود السرعة

### عمالة الأطفال

- يجب كتابة شروط صارمة في عقد المقاول لحظر تعيين الأطفال دون سن ١٨ عامًا
- يجب أن يحتفظ المقاول بنسخة من هويات جميع العاملين

### التراث الثقافي

- اتباع إجراء العثور على الآثار (مرفق رقم (٣))

### تدقيق العمالة و العنف القائم على النوع الاجتماعي

- إعداد مدونة سلوك مناسبة تنص على التزام العمال تجاه فئات المجتمع والسلوكيات التي يجب تجنبها
- يجب تدريب جميع العاملين على قواعد السلوك.
- يجب توقيع قواعد السلوك من قبل المقاول من الباطن
- تعريف بمدونة قواعد السلوك يتم إجراؤه كل أسبوعين للعاملين الدائمين والوافدين الجدد قبل بدء العمل.
- تطبيق المتطلبات الكاملة المتعلقة بتشغيل آلية التظلم بما في ذلك القنوات المجهولة
- زيادة وعي السكان المحليين حول التزام المشروع تجاه المجتمعات والتدابير المتخذة لذلك من خلال المشاورات العامة ومناقشات على شكل مجاميع.
- تطبيق العقوبات على العاملين المخالفين لقواعد السلوك

### البنية التحتية والمرافق

- في حالة تلف أحد المرافق الموجودة تحت الأرض وأنابيب البنية التحتية ، يجب اتباع الإجراءات القياسية ، بالإضافة إلى إعداد تقرير توثيقي للحدث.
- في حالة قطع المياه، يجب إعلام المجتمع المحلي قبل القطع
- تنفيذ آلية للشكاوى

### إدارة الخدمات الموقعية

- إقامة المخيم داخل أراضي محطة المياه

- ضمان إقامة كرفانات البناء الملائمة ومرافق الصرف الصحي للبناء، أي إنشاء خزان لتخزين المياه العادمة المنزلية الناتجة عن المخيم.
- اتباع أفضل ممارسات إدارة المخلفات وتدابير التخفيف الواردة في خطة الإدارة البيئية والاجتماعية.
- مراقبة ظروف العمل عن كثب ، وفرض تدابير للتحكم في انتقال الأمراض المعدية.
- الحفاظ على آلية فعالة للتنظيم (تمت مناقشتها في فصل مشاركة أصحاب المصلحة). يجب أن تكون آلية معالجة المظالم هذه حساسة للنوع الاجتماعي وتضمن السرية
- انخراط محدد مع النساء والفتيات يتضمن التوعية بالعنف القائم على النوع الاجتماعي والوصول إلى قنوات مجهولة للإبلاغ عن الحالات.

### العقوبات وإلغاء التعاقد

إذا فشل المقاول في الوفاء بأي من الالتزامات المذكورة أعلاه بموجب العقد ، فسيتم تطبيق العقوبات التالية:

المراحل	الإجراء	التفاصيل
المرحلة الأولى	التحذير	يجب أن يتلقى المقاول بيان تحذير يتضمن الإجراءات التصحيحية المقترحة. يجب أن تبدأ جميع الإجراءات التصحيحية في مدة لا تزيد عن أسبوعين. يجب على المقاول اتخاذ الإجراءات التصحيحية بشكل سريع.
المرحلة الثانية	الدفعات النقدية	في حالة عدم التزام المقاول بخطة الإدارة البيئية والاجتماعية ، لا يحق للمقاول الحصول على الدفعات النقدية بموجب شروط هذا العقد. لن يتم صرف المدفوعات حتى يتم وضع خطة عمل واضحة ويبدأ المقاول في تنفيذ الإجراءات المتفق عليها.
المرحلة الثالثة	إلغاء التعاقد	لن يتم إنهاء العقد بسبب عدم الوفاء بالتزامات خطة الإدارة البيئية والاجتماعية. ومع ذلك ، سيخصم مالك المشروع تكلفة تنفيذ خطة الإدارة البيئية والاجتماعية من العقد. وفي هذه الحالة يجب إرفاق دليل واضح على فشل المقاول في تنفيذ خطة الإدارة البيئية والاجتماعية

## Annex (5): Cultural Heritage Chance Find Procedure

Cultural property includes monuments, structures, works of art, or sites of significance points of view, and are defined as sites and structures having archaeological, historical, architectural, or religious significance, and natural sites with cultural values. During the project induction meeting, all contractors will be made aware of the presence of an on-site archaeologist who will monitor earthmoving and excavation activities.

The initial phase of the proposed emergency rehabilitation operations pose limited risks in damaging cultural property since subprojects will largely consist of small investments in community infrastructure and income generating activities, rehabilitation of existing structures, and minor public works. Further, it is understood by the Consultant that any activity that would adversely impact cultural property would make a subproject ineligible. Nevertheless, the Consultant will check that the following procedures for identification, protection from theft, and treatment of discovered artifacts should be followed in the event that archaeological material is discovered:

- Stop all construction activities in the area of the chance find.
- Delineate the discovered site or area.
- Record the find location, and all remains are to be left in place.

- Secure the site to prevent any damage or loss of removable objects. In cases of removable antiquities or sensitive remains, a night guard shall be present until the responsible local authorities and the Ministry of Culture immediately (within 24 hours or less);
- Notify the supervisory Engineer who in turn will notify the responsible local authorities and the Ministry of Culture (within 72 hours). The significance and importance of the findings should be assessed according to the various criteria relevant to cultural heritage; those include the aesthetic, historic, scientific or research, social and economic values.
- Decisions on how to handle the findings shall be taken by the responsible authorities and the Ministry of Culture. This could include changes in the layout (such as when finding an irremovable remain of cultural or archaeological importance) conservation, preservation, restoration and salvage.
- Implementation for the authority decision concerning the management of the finding shall be communicated in writing by the Ministry of Culture; and
- Construction work could resume only after permission is given from the responsible local authorities and the Ministry of Culture concerning safeguard of the heritage.
- The Consultant will ensure that during project supervision, the Site engineer will monitor the above regulations relating to the treatment of any chance find encountered and observed. Relevant findings will be recorded in World Bank Project Supervision Reports (PSRs), and Implementation Completion Reports (ICRs) will assess the overall effectiveness of the project's cultural property mitigation, management, and activities, as appropriate.

## ANNEX (6): Letter of clearance from UXO

REPUBLIC OF IRAQ  
MINISTRY OF Health and  
ENVIRONMENT  
DEPARTMENT OF MINE ACTION  
Regional Mine Action Center North  
RMAC-N



جمهورية العراق  
وزارة البيئة  
دائرة شؤون الألغام  
المركز الاقليمي الشمالي

No: / / 2023  
Date: / / 2023

العدد: ١١٠٠ / ع  
التاريخ: ٢٠٢٣ / ٦ / ٤

السى / محافظة كركوك / قسم ادارة الجودة الشاملة  
م / مخلفات حربية

تهديكم دائرتنا اطيب التحيات ...

اشارة الى كتابكم ذي العدد ٩٢٩٣ في ٢٠٢٣/٤/٢٧ المتضمن ارسال فريق عمل من دائرتنا الى محافظة كركوك لغرض الاشراف على اعمال المسح غير التقني ( NTS ) للمناطق المذكورة في مرفق كتابكم اعلاه نود ان نبين مايلي :-

- عدد القرى التي تم اجراء اعمال المسح غير التقني ( NTS ) عليها من قبل مديرية دفاع مدني كركوك وبإشراف فريق من دائرتنا هي ( ١٣ ) قرية وتم ادخال استمارات الخاصة بالعمل في قاعدة بيانات دائرتنا.

- القرى المذكورة في كتابكم اعلاه الخاصة بمشاريع صندوق الاجتماعي للتنمية وبعد اجراء اعمال المسح غير التقني ( NTS ) وتاييد مختاري القرى تبين بانها خالية من المقذوفات والالغام والعبوات الناسفة .

للتفضل بالاطلاع ... مع التقدير

المرفقات :-  
- كتابكم ذي العدد ٩٢٩٣ في ٢٠٢٣/٤/٢٧ .

الدكتور  
صباح حسن الحسيني  
مدير عام دائرة شؤون الألغام  
٢٠٢٣/٦/٤

نسخة منه الى :-  
- مكتب الوزير / يرجى التفصيل بالاطلاع ... مع التقدير.  
- دائرة شؤون الالغام / شعبة التنسيق والعلاقات / للاطلاع لطفاً .  
- دائرة شؤون الالغام / قسم العمليات والمراقبة النوعية / للاطلاع لطفاً .  
- دائرة شؤون الالغام / قسم ادارة المعلومات / مذكرتكم المرقمة /ع/ ٥٢٢ / في ٢٠٢٣/٦/١ ... للاطلاع لطفاً .  
- دائرة شؤون الالغام / المركز الاقليمي الشمالي / مع الاولويات / للتوثيق .